



**TENNESSEE CHESS NEWS**  
**FALL 2009**

**VOLUME 52**

**NO. 4**

Tenn. Open Championship .....	6
Tennesseans at U.S. Open .....	9
Douthitt 8 <sup>th</sup> at Polgar's Girls Inv. ....	11
Battle of Murfreesboro .....	13
Tennessee Tempo in Action ....	17

---

This magazine is being provided to current Tennessee Chess Association members as one of their benefits for supporting chess activity in Tennessee. It is to be considered legal property of the *Tennessee Chess Association*. We are trusting you to not abuse the privilege of access to this information. Abuse would be considered copying over two pages for publication without crediting the source (Tennessee Chess News—*TCN*). However, you are permitted to download a copy of this publication to your personal computer. If you desire to use this content for other purposes than your own copy, contact the editor, Leonard Dickerson, for approval. Thank you for your support of chess in Tennessee and observation of these few requests!

November 7, 2009      **East Tenn. Scholastic Fall Open**  
Milligan College, Johnson City  
423-975-8031 or Email: jcsimonsen@milligan.edu

November 28, 2009      **49<sup>th</sup> Mid-South Open**  
Hampton Inn, Memphis  
2 Sections: Open & Under 1200  
Entries: Memphis Chess Club

December 5, 2009      **Alcoa's Chess Crusades**  
Alcoa Middle School, Alcoa  
3 Sections: Open, U1050, Unrated  
Info: NESGIV4DAV@aol.com

January 9–10, 2010      **Tennessee Winter Open**  
Henry Horton State Park, Chapel Hill, TN  
6 Sections: U1000 thru Open Section  
Info: Chris Prosser; Tel. 615-426-7105  
See website for details and instant entry!

January 23, 2010      **Individual Regional**  
Region 1: Univ. Ctr. of Univ. of TN, Knoxville  
Region 2: Univ. Ctr. of UTC, Chattanooga  
Region 3: Univ. Ctr. of Austin Peay, Clarksville  
Region 4: Memphis Univ. School, Memphis  
See TCA website for contacts: [www.tnchess.org](http://www.tnchess.org)

Use our new chess calendar and pgn game viewer on our revised website: [www.tnchess.org](http://www.tnchess.org)

**TENNESSEE CHESS NEWS** is the official publication of the  
Tennessee Chess Association.

### MEMBERSHIPS

TCA annual dues are \$10 for a *regular* membership or *student* membership. Additional members of a family may join for one dollar each, but only one copy of printed **TCN's** will be available per family. Both regular and patron memberships are for a 12-month period, starting in the month of purchase and expiring after a 12-month period.

**Tax deductible Patron Memberships** are available beginning at \$100 per year for those who wish to help support the TCA and the FFTC. These memberships expire one year from the date of payment. Patron membership categories are listed below:

**PATRON — \$100**

**PATRON KING — \$300**

**PATRON MASTER — \$500**

**PATRON GRANDMASTER —  
\$1000 plus**

The benefits that pertain to the different level of patronage are currently being refined and will be detailed on our revised website soon.

### TOURNAMENT ANNOUNCEMENTS

**TCN** prints listings of upcoming tournaments that require TCA membership in each issue for free. Submit complete TLA information to Larry Grohn, Tournament Coordinator.

E-MAIL: [LarryGrohn@comcast.net](mailto:LarryGrohn@comcast.net)

### TN CHESS NEWS STAFF

#### Editor:

Leonard Dickerson

#### Contributors:

Roy Manners

TCN publishing schedule and  
deadline for submissions:

Spring 2009 - May 1 covering  
Feb, Mar, and Apr events

**Deadline: Apr 18, 2009**

Summer 2009 - Aug 1 covering  
May, Jun, and Jul events

**Deadline: July 18, 2009**

Fall 2009 - Nov 1 covering  
Aug, Sept, and Oct events

**Deadline: Oct 18, 2009**

Winter 2010 - Feb 1 covering  
Nov, Dec, and Jan events

**Deadline: Jan 18, 2010**

Please submit material by e-mail  
to: [lsdick@tds.net](mailto:lsdick@tds.net)

## TENNESSEE CHESS ASSOCIATION & FOUNDATION FOR TENNESSEE CHESS

### PATRON MEMBERS

K Patron Grandmaster K

Dr. Martin Katahn

n Patron Member n

Dr. Juan T. Aristorenas

Mark Ishee

Peter Lahde

Ron Seaney

Paul Semmes

R. K. Shimabukuro

Brian Vogt

The **Tennessee Chess Hall of Fame** was established to honor those members who have distinguished themselves through their outstanding achievements in chess, either in competition or in chess organization or promotion. Peter Lahde is chairman of the electing committee, and guidelines for nominations are posted onsite.

### TCA HALL OF FAME

Peter Lahde	1990
Robert Coveyou	1990
Jerry Sullivan	1990
Martin Southern	1990
Tom Finucane	1990
Robert Scrivener	1990
L. Hunter Weak	1990
John Hurt	1992
James A. Sweets	1993
Rea Hayes	1997
James A. Wright	1998
Dr. Martin Katahn	2002
David Burriss	2003
Albert Hodges	2005

## FROM THE EDITOR

The modernization of the TCA website marks a major step forward in making the TCA more compatible with the current computer generation. We now offer services (such as online registration and an active tournament calendar) and have a format that will be easier to maintain and keep updated. Too, our site is more attractive and marketable to potential donors – of which we hope you are one!

As you can see, the **TCN** is available onsite to everyone without an access key being necessary. This is a trial presentation that might be reconsidered in the future. Keep in mind that only members will receive the paper copy of the yearbook issue which is printed in the summer (August 2010). Moreover, we would like the membership to comment on what they think of the overall website and what further areas might need improving.

This issue is chiefly devoted to coverage of the 63<sup>rd</sup> Tenn. Open Championship, with games and crosstables included. But Tennesseans were outstanding in national tournaments as well. Hence Autumn Douthitt's achievement in the Polgar National Invitation Chess Championship is covered as well as the U.S. Open where several Tennesseans scored highly.

All games included in the **TCN** have been put into a pgn file for either downloading or viewing on our website. The name of the file is "TCN Fall\_w." The games that were submitted at the Tenn. Open are included in a separate file entitled "TN\_Open\_09." There is duplication within the two files, and the game file of the Tenn. Open has additional material that was not used in the **TCN** because of space limitations.

## Decisions Affecting Scholastic Chess

The Scholastic Coordinator (Harry Sabine) routinely assembles the Regional Scholastic Coordinators at a meeting held after the Team Finals have taken place to review scholastic issues that arose during the year and discuss what improvements can be implemented for the upcoming years. At their July 11<sup>th</sup> meeting they made two important decisions:

(1) For consistency with how age and grade qualifications are regulated for regular schools, **the age requirement for those scholastics who attend Home Schools will be dropped.**

TCN/Fall 2009\_03

(2) For the **Individual Regionals**, the 5 min/Game tiebreaks may use a **five-sec delay on the clock time**. However, this does not apply to the Team Qualifiers and Finals, whose tiebreakers will remain at a flat 10 minutes. Note that the main reason that the time for the scholastic team tournaments do not allow a 5-sec increment is that clocks with this feature may not be available region-wide for the teams (which has 8 participants rather than 2). The Scholastic Chess Committee will examine the trial implementation of the 5 sec. delay for the Individuals and base their final decision on whether to make it an official change after concerns and feedback are evaluated.

♙ - ♘ - ♗ - ♖ - ♕

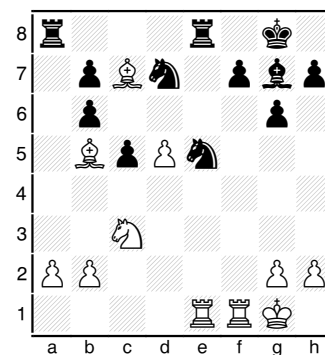
Here is an introductory game to whet your appetite for this game-packed issue (28 games are included):

### TN Open Championship – 4

Peter Bereolos

John Patty

1. d4 Nf6 2. c4 g6 3. Nc3 Bg7 4. e4 d6 5. f4 O-O 6. Nf3 c5 7. d5 e6 8. Be2 exd5 9. cxd5 Bg4! 6 Re8 is better. 10. O-O Re8 11. e5 White goes for the throat, but h3 should yield a comfortable plus. Bxf3 12. Bxf3 dxe5 13. fxe5 Rxe5 14. Bf4 Re8 (Black could gather enough pawns to get a materially equal game if he dared Rf5: 14... Rf5 !? 15. Qd2 Nxd5 16. Bxd5 Bd4+ 17. Be3 Rxd5 18. Nxd5 Qxd5) 15. Qb3 Qb6 16. Qxb6 axb6 17. Bc7 Nfd7 = 18. Rae1 Ne5 Black would have been better playing Be5, forcing White to make a decision about his bishop on c7. (18... Be5 19. Bxe5 (19. d6 Nc6 =) 19... Nxe5 20. Be2 Nbd7) 19. Be2 Nbd7 20. Bb5 (See DIAGRAM)



Rac8 (20... Ng4! 21. Rxe8+ (21. Bxd7? Bd4+ 22. Kh1 Nf2+ 23. Kg1 Nd3+ 24. Kh1 Rxe1 25. Rxe1 Nxe1 -) 21... Rxe8 22. g3 Bd4+ 23. Kh1 Ngf6) 21. d6? (21. Bxe5 Nxe5 22. Bxe8 Rxe8) 21... f6?? Necessary was Nc6, when Black is holding. 22. Nd5 White has 36 min. remaining. Kf7 Black has 2 min. remaining. 23. Bxd7 Much better was Nxb6, but since Black was losing on time it really didn't matter. 1-0

TCN/Fall 2009\_04

## Tennessee Open Championship

The 63<sup>rd</sup> Tenn. Open Championship was held in Crossville, TN at the Cumberland Co. Community Complex on September 5–6. The three-sectioned, five-round Swiss used the unusual time control of 30 moves in 80 minutes followed by 60 min/SD.

With 35 participants, the **Open Section** of the championship was almost as large as the Amateur Section (Under 1600) and the Novice Section (Under 1200) combined. And it was also a strong turn-out, with 13 players rated Expert or better. Therefore it was not a big surprise when co-championships emerged from the competitive section: **Ronald Burnett, Patrick Tae, and David Justice** each accumulated 4.0 points and are the 2009 co-Champions of Tennessee. Patrick had the hardest path to the top, having to face both the other two co-champions and overcome last year's champion, Todd Andrews (who finished this year with 3.5 points). Patrick's games against Andrews and Justice immediately follow this article.

**Victor Suich and William Van Deer Meer** both finished with 4.0 points in the **Amateur Section** to be crowned co-champions. Victor actually beat Van Deer Meer in their 4<sup>th</sup> round encounter (see page 33) but gave up two other draws in the stiff competition.

In the **Novice Section**, 882-rated **Jordan Hoyos** went undefeated to capture the Novice Championship. Kevin Hong and Alex Perhac shared second place with 4.0 points.

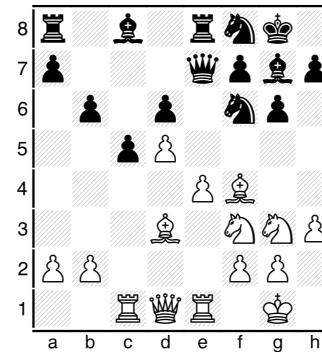
With 35 players in the Open Section, 17 in the Amateur Section, and 21 players in the Novice Section, the registrants could not quite offset the offered prize fund of \$4,000. However, this lost (over \$1,000) was expected as previous year's monetary losses have been even more traumatic. To be able to host a state championship and offer attractive prizes and plaques is one of the main reasons that the Tennessee Chess Association must require dues of at least ten dollars.

See the crosstables for the sections on pages 29–33. Games from the tournament are included throughout the issue. Additional games are included in a downloadable pgn file (TNOpen09) or can be viewed using the game player on our website.

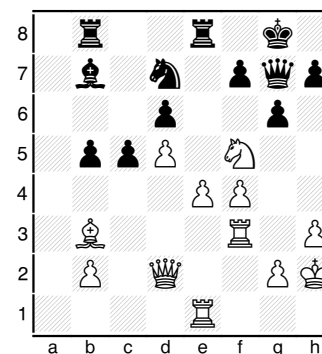
**Tennessee Open – 3**  
**Todd Andrews–2360**  
**Patrick Tae–2219**

1. d4 d6 2. Nf3 Nf6 3. Nc3 c6 4. e4 Nbd7 5. Bd3 e5 6. O-O Be7 7. Be3 O-O 8. Ne2 Re8 9. c3 Bf8 10. Ng3 g6 11. h3 Bg7 12. Re1 exd4 13. cxd4 c5 14. Rc1 b6 15. Bf4 Nf8 16. d5 Qe7

TCN/Fall 2009\_05



17. Nd2 (17. Bb5! Bd7 18. Bf1 threatening e5, after having protected the d-pawn) 17... N6d7 18. Bb5 Rd8 19. Nc4 Ne5 20. Qd2 (20. Nxe5 Bxe5 21. Bxe5 Qxe5 22. Rc3 Bd7 23. Bd3 b5 +/-) 20... Nxc4 21. Bxc4 Nd7 22. Bg5 Bf6 23. Bxf6 Qxf6 24. f4 a6 25. a4 Re8 26. Rc3 Rb8 27. Rf3 Qg7 28. Bb3 A little better is Qe2 followed by e5. Bb7 29. Kh2 b5 30. axb5 axb5 31. Nf5



gxf5 Fritz recommends: 31... Qf6 32. Nh6+ Kg7 33. Ng4 Qd4 = 32. Rg3 Qxg3+ 33. Kxg3 fxe4 34. f5 f6 35. Qa5 Ne5 36. Qc7 Nf7 37. Kf2 Better

may be Rxe4: 37. Rxe4 Rxe4 38. Qxb8+ Kg7 39. Ba2 Re3+ 40. Kf2 Re7 41. g4 h6 42. Qa7 c4 43. Qb6 +- 37... c4 38. Rxe4 Bxd5 39. Rg4+ Kf8 40. Bd1 Rb7 41. Qa5 Ne5 42. Rd4? Nc6 43. Qa3 Nxd4 44. Qxd6+ Ree7 45. Qxf6+ Rf7 46. Qh8+ Ke7 47. Qxd4 Rxf5+ 48. Kg1 Kd6 = 49. Qh8 Rff7 (49... Rbf7 50. Be2 Bxg2 51. Bxc4 bxc4 52. Kxg2 =/+ 50. Bg4 Kc5 51. Qc8+ Bc6 52. Be6 Rfe7 53. Qf8 Bd5 54. Bf5 Kd4 55. Qf6+ Kc5 56. Qf8 Kd4 57. h4 b4 58. Qf6+ Kc5 59. g3 Still playing to win the drawish game. Rf7 60. Qe5 Rbe7 61. Qf4 Re2 62. g4 Rfe7 (62... Rxb2 63. Qe3+ Kb5 64. Qe8+ Ka6 65. Qc8+ = ) 63. Qb8 Rxb2 64. Qc8+ Bc6 65. Qf8 Rbe2 66. Bxh7 Kb5 67. Bf5 Re8 68. Qd6 Ra8! 69. Qd4 Raa2 70. Kf1 Rad2 Decisive is Red2. 71. Qf4 Rh2 (71... Bg2+ 72. Kg1 Re1+ 73. Kh2 Rh1+ 74. Kg3 Rh3#) 72. Qb8+ Ka4 73. Ke1 Rdg2 74. Qa7+ Kb3 75. Qe3+ c3 76. Be6+ 0-1

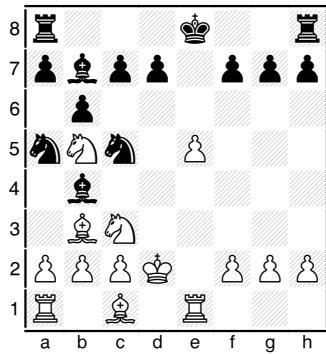
**Tennessee Open-1**  
**Alan McCormick–1733**  
**Patrick Tae–2219**  
**Result 0-1**

1. e4 e5 2. d4 exd4 3. Qxd4 Nc6 4. Qe3 Nf6 5. e5 Nd5 Possible is Ng4, but this sacrificial line should only lead to equal play-if you know the sharp lines: 5... Ng4 6. Qe2 d5 7. exd6+ Be6 8. Nf3 Bxd6 9. Ng5 Nd4 10. Nxe6 fxe6 11. Qxg4 Nxc2+ 12. Kd1 Nxa1 13. Qxe6+ 6. Qe4

TCN/Fall 2009\_06

**McCormick-Tae, cont.**

6... Nb6 7. Nf3 Qe7 8. Nc3 Qb4 9. Qe2 Na4 10. Qc4 Qxc4 11. Bxc4 Bb4 12. Kd2 (12. Bd2 Nxc3 (12... Nxb2? 13. Bb3) 13. bxc3 Bc5 +/-) 12... Na5 13. Bb3 A little better is Bb5, helping to clarify the pin of the White knight. Nc5 14. Re1 b6 15. Nd4 Bb7 16. Ndb5 Better was the simple f3.



O-O-O! 17. a3?? (17. Nxa7+ Kb8 18. Nab5 d6 19. exd6 Ba6 20. Kd1 Bxc3 21. Nxc3 Rxd6+ 22. Bd2 Rhd8 -/+) 17... Ncxb3+ 18. cxb3 Nxb3+ 19. Kd3 Bxc3 20. Kxc3 Nxa1 21. Bf4 a6 22. Nd4 Bxg2 23. Rxa1 Be4 24. h4 f6 25. Rg1 Bg6 Playing Re8 also works, threatening to fork the two pieces with fxe. 26. h5 Bxh5 27. Rxg7 fxe5 28. Bxe5 Rdg8 29. Re7 Re8 30. Nf5 Rhf8 31. Rxe8+ Rxe8 32. Bg3 Bg6 33. Ne3 Be4 34. Ng4 d5 35. Nf6 Re6 36. Nh5 c5 37. Nf4 Re8 38. b4 Kb7 39. Nh5 d4+ 40. Kd2 c4 41. Nf6 Re6 42. Nd7 c3+ 43. Kc1 d3 44. Nc5+ bxc5 0-1

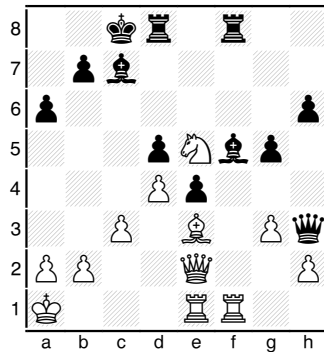
**Tennessee Open-5**

David Justice - 2096

Patrick Tae - 2219

Result 1/2-1/2

1. e4 e5 2. Nf3 Nc6 3. Bb5 f5 The tactical Schliemann demonstrates co-champion Tae's willingness to enter complications. 4. Nc3 fxe4 5. Nxe4 d5 6. Nxe5 dxe4 7. Nxc6 Qg5 8. Qe2 Nf6 9. f4 Qxf4 10. Ne5+ c6 11. d4 Qh4+ 12. g3 Qh3 13. Bc4 Be6 14. Bf4 O-O-O 15. O-O-O Bd6 16. Rde1 Finally deviating from Book, with Kb1 and R(h)-f1 being recommendations. Rhf8 17. Kb1 Bc7 18. c3 Nd5 19. Rhf1 h6 20. Ka1 g5 21. Bc1 Bf5 22. Bxd5 cxd5 23. Be3 a6 24. Bg1??



Bd7? (24... Bxe5 25. dxe5 Bg4 26. Qe3 Qxf1! {Not being cute, but necessary to avoid a perpetual check.} 27. Qc5+ Kd7 28. Qd6+ Ke8 29. Qg6+ Qf7) 25. Rxf8 Rxf8 26. Nxd7 Qxd7 27. Rf1 Rxf1+ 28. Qxf1 Qg4 -/+ 29. Be3 Qf3 30. Qg1 b5 31. Kb1 Qe2 32. Kc1 Bd8 33. Qf2 Qxf2 34. Bxf2 h5 35. Be3 Kd7 36. Kd2 Ke6 37. Ke2

Kf5 38. Kf2 Bc7 39. Kg2 a5 40. b4 a4 (40... axb4 41. cxb4 Bd6 42. a3 g4 43. Kf2 Be7 44. Ke2 and though Black's pieces are better placed, it still likely a draw.) 41. h3 Bd6 42. Kf2 Kg6 43. g4 Bf4 44. Ke2 Bg3 45. Kd1 Black has a slight advantage but no penetration point. 1/2-1/2

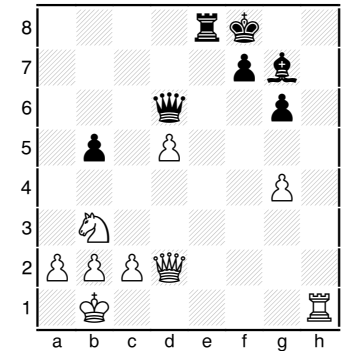
**Battle of Murfreesboro**

Will Stevenson - 2111

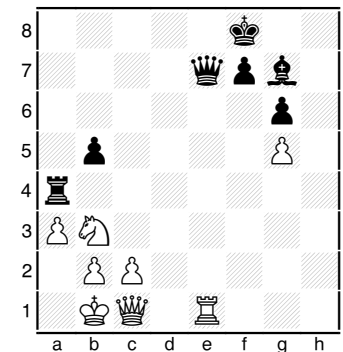
Roy Manners - 1225

1. e4 c5 2. Nf3 d6 3. d4 cxd4 4. Nxd4 a6 5. Nc3 e5 6. Nb3 Nf6 7. Be3 Be6 8. f3 Nbd7 9. g4 h6 10. Qd2 Be7 11. O-O-O Rc8 12. Kb1 Qc7 13. Be2 b5 = 14. Rhe1 I'm unsure what this move promotes, unless some wild variation with f4 is planned. More consistent was h4. Nb6 15. Bxb6 Qxb6 16. Nd5 Now f4 could justify the earlier Re1: 16. f4 Qa7 17. Bf3 Bxg4 18. Bxg4 Nxg4 19. Nd5 Nf6 20. Qg2 O-O 21. Rg1 g6 22. Nxf6+ Bxf6 23. f5 g5 24. h4= 16... Bxd5 Even better was Nxd5, removing the g-pawn's target. Nonetheless, the d-file is closed and the burden is on White to prove that he has something. 17. exd5 Qc7 18. h4 g6?! Nd7 would have been fine. Now Black's disturbed pawns on the kingside make castling look unappetizing. 19. f4 Ne4 (19... exf4!? 20. c3 g5 21. Nd4 +/- Nxd5 22. Nf5 Ne3 23. Qd4 Rg8 24. Nxe3 fxe3 25. Qxe3 Rg6 and though White has the initiative,

Black is still hanging tough.) 20. Bxb5+ axb5 21. Rxe4 Bxh4 Better was f6 or castles. Black has no moves to spare snatching pawns. 22. fxe5 O-O 23. exd6 Qxd6 24. Qxh6 Bf6 25. Rh1 Rfe8 26. Qh7+ Kf8 27. Rxe8+ Rxe8 28. Qh6+ Bg7 29. Qd2 Qe5 30. Qc1 (30. c3?? Qe4+) 30... Qxd5 31. Rf1 Re4 32. g5



Qe5 = 33. Rg1 Qe7?! Good was b4 to restrict White or Kg8 to avoid later threats. 34. a3 Ra4 35. Re1?



Re4 (35... Bxb2! 36. Kxb2 Qxa3+ 37. Kc3 Rc4+ 38. Kd2 Qd6+ 39. Ke2 Qe6+ (39... Qh2+ 40. Kd1 Qh5+) 40. Kd1

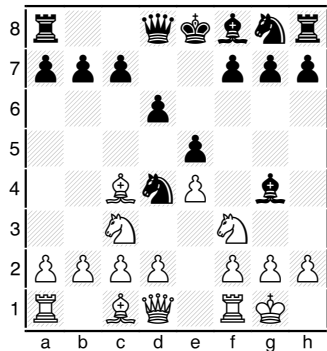
**Stevenson-Manners, cont.**

Qg4+ 41. Re2 Qg1+ 42. Kd2 Qxg5+ =) **36. Rg1** (36. Rxe4 Qxe4 37. Qd1 Kg8 38. Qd2 f5 39. gxf6 Bxf6 +/-) **36... b4 37. a4 Qa7?!** Black begins decentralizing his pieces. Kg8 was again better, waiting for White to commit to some plan. **38. a5 Re8 39. Rf1** Even stronger is Re1. **Qe7 40. Qf4 Kg8 41. Rd1 Be5 42. Qc4 Qxg5 43. Rf1 Qe7 44. a6 Bb8 45. Na5 Rf8** Better was Qe6. **46. Nc6 Qc7 47. Re1** Stronger was Qh4 with the idea of following up with Rh1. Now 47... Qf4 is an unattractive defense. Perhaps Roy just ran out of time here, though? **1-0**

**Tenn. Open Novice**

**Kevin Hong - 1068**  
**Austin Lillis - 868**  
**Result 1-0**

**1. e4 e5 2. Nf3 Nc6 3. Bc4 d6 4. Nc3 Bg4 5. O-O Nd4?**



**6. Nxe5!** Kevin plays alertly and shows the command of tactics which allowed him to secure 2nd place in the

Novice Section. **dx e5** After 10 minutes thought, Black makes the correct move to avoid the celebrated mate: 6... Bxd1 7. Bxf7+ Ke7 8. Nd5# **7. Qxg4** and went on to mate on the 53rd move. **1-0**



**TN at the U.S. Open**

The 110<sup>th</sup> Annual U.S. Open-the world's oldest national chess championship-was held August 1-9 in Indianapolis, IN. Among the 81 masters, the field of 455 players included several players from Tennessee who distinguished themselves. There was a 6-way tie for first (all grandmasters of 2500+ strength) with 7.5 points each. **Dmitry Gurevich** won the tournament in a speed-chess playoff, receiving \$2,612.30 and a \$200 bonus. (*The U.S. Chess Champion Nakamura did not play in the event.*)

The Tennesseans who made the long trip to compete in this prestigious event finished in the below specified order, according to the Official Wall Chart: **Ronald Burnett** had 6.5 points and finished in 24<sup>th</sup> position; **Todd Andrews** also had 6.5 points and finished in 27<sup>th</sup> position. **Peter Bereolos** and **Mariano Sano** (2212) finished in 46<sup>th</sup> and 54<sup>th</sup>

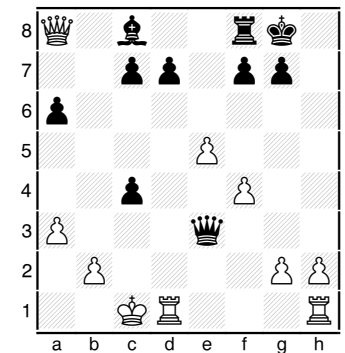
position, respectively, with 6.0 points. **Joshua Suich** finished in 87<sup>th</sup> position with 5.5 points; **Jerry Wheeler** and **John Patty** achieved 5.0 points to finish in 130<sup>th</sup> and 131<sup>st</sup> place, respectively. **Jason Knight** finished with a respectable 4.5 points and was listed in 229<sup>th</sup> position. **Victor Suich** also had 4.5 points and finished in 246<sup>th</sup> position. Moreover, his rating leapt from 1537 to 1648. **Bill Hall** had 2.5 points to finish in 400<sup>th</sup> position-but did not play in over half of the games due to the distraction of being the Executive Director of the USCF and having attendant responsibilities.

**Jessica Leigh Pope**, and **Cary Carter** each had 2.0 points. **Phillip Smith** played one game and received two byes, not playing the remainder of the games. **Jake Kleiman** lost the one game that he played to a 1800 player and withdrew as it was clear that he was out of form.

Ron and Todd tied for 3rd-4th in the Master Division. Victor Suich tied for 4<sup>th</sup> in the Class C Division and grabbed a check for \$181.20 while amassing a bunch of points due to having played much higher-ranked opponents throughout the tournament (as the following game demonstrates).

**U.S. Open - 9**  
**September 8, 2009**  
**Steven Young - 1787**  
**Victor Suich - 1532**  
**Result 0-1**

**1. d4 Nf6 2. c4 e5 3. dx e5 Ne4 4. Nd2 Bb4 5. a3 Bxd2+ 6. Bxd2 Nxd2 7. Qxd2 Nc6 8. Nf3 Qe7 9. e4** White probably should hold on to the pawn: 9. Qf4 O-O 10. O-O-O Re8 11. Rd5. **9... Nxe5 = 10. Nxe5 Qxe5 11. O-O-O O-O 12. Bd3 a6** More reliable is d6, stemming pawn advances. **13. f4 Qc5 14. e5 b5 15. Qe2** Better is Qc2, but this threatens Qe4. **bx c4** Prosaic is Bb7. **16. Bxh7+ Kxh7 17. Qe4+ Kg8 18. Qxa8 Qe3+**



**19. Rd2?** (19. Kb1 c3 20. Qf3 +-) **19... c3! 20. bxc3 Qxc3+ 21. Rc2 Qa1+ 22. Kd2 Qxh1 23. Rxc7 Qxh2 24. Rxc8 Qxf4+ 25. Kd3 Qg3+ -/+ 26. Kd4 Qxa3 27. Rxf8+ Qxf8 28. Qxa6 Qb4+ 29. Ke3 Qc3+ 30. Kf4 Qd2+ 31. Kf3 Qd5+ 32. Kf2 Qd4+ 33. Kf3 Qxe5 34. Qc8+ Kh7 35. Qxd7 Qf6+ 36. Kg3**  
 (continued on page 19)

## Douthitt: Doing Tennessee Proud - 8<sup>th</sup> at the SPNI

The Tennessee Girl's Champion, **Autumn Douthitt**, a 14-year old Freshman at Montgomery Central High School and member of the Clarksville Chess Club, continues to impress. After winning her championship April 18, she represented Tennessee July 26-31 in the **Susan Polgar National Invitation Chess Championship (SPNI)**, held in Lubbock, TX. And in Roy Manners words: "She did Tennessee proud!"

She tied for 8<sup>th</sup> place out of 60 participants! To make her victory even more amazing, she has the lowest rating of anyone who finished in the top half of the tournament-even after you include the 90 additional USCF rating points that she added because of her stellar performance!

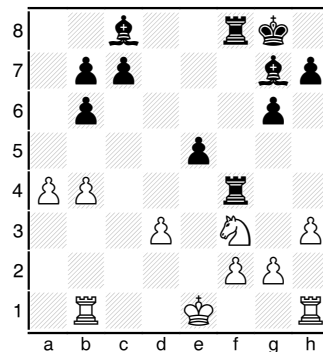
Autumn currently studies under National Master Henry Robinson of Charlotte, who-as was reported in the last TCN-was champion of the Tenn. Senior Open. Autumn is a member of the Montgomery Central High School Chess Team and also practices with the Clarksville Chess Club (which meets at 7 p.m. on Thursdays in basement of the

library at Austin Peay State University).

Without variance or regard to her opponent's booking-up on her, she used exclusively the Pirc Defense as Black and employed the Stonewall Attack as White. These battles, of which she won 4 of 6, are included in this issue. One can only imagine what talent she will display once she adds a little more variety to her game. As it is, command of tactics gave her chances in the games, as can be seen by viewing 4<sup>th</sup> and 6<sup>th</sup> round game. The electric tactic that she unleashed in her sixth round game (page 16) shows that she is, indeed, a real talent who is going to continue to do both herself and Tennessee proud in the future.

**SPNI Chess Tournament - 4**  
**Jenny Ma - 970**  
**Autumn Douthitt - 1339**  
**Result "0-1"**

1. e4 d6 2. Nf3 Nf6 3. Nc3 g6  
 4. d4 Bg7 5. e5 dxe5 6. dxe5 Qxd1+ 7. Nxd1 Nd5 8. Ne3 Nb6  
 9. Nc4 Nc6 10. Nxb6 axb6 11. Bf4 O-O 12. h3 Nb4 (12... Ra4 13. Bg3 Nxe5 14. Nxe5 Bxe5 15. Bxe5 Re4+) 13. Bd3 Ra4  
 14. e6?? White panics. Bg5 would have been better. Nxd3+  
 15. cxd3 Rxf4 16. exf7+ R8xf7  
 17. Rb1 e5 18. b4 Rf8 19. a4  
 If 0-0, then Bxh3.



e4! Excellent exploitation of the uncastled king! 20. dxe4 Rxe4+ 21. Kd1 Rd8+ 22. Nd2 (22. Kc1 Rc4#) 22... Bh6 23. Rb2 Red4 24. Kc1 Bxd2+ 25. Kb1 Bf5+ 26. Ka2 Bc3 27. Rc1 Bxb2 28. Kxb2 Rxb4+ 29. Ka1 Rd3 30. Ka2 Be6+ 31. Ka1 Ra3# 0-1

**SPNI Chess Tournament - 3**  
**Autumn Douthitt - 1339**  
**Michelle Chen - 1856**

1. d4 d5 2. f4 Boldly heading straight for a stonewall formation. Nf6 3. Nf3 e6 4. e3 c5 5. c3 Nc6 6. Bd3 Be7 7. O-O O-O 8. Nbd2 b6 9. Ne5 Bb7 10. b3 a6 11. a4 Alertly clamping down on queenside expansion by Black. Rc8 12. Ba3 Though chess engines prefer Ba3, it is probably better to just post the bishop on b2 and play the position as a Colle. And if Black responds with cxd4, then exd works best, keeping the pawn on c3 so that the Black knight can't jump to b4. By this means White will be able to at least initiate a

kingside attack. cxd4 13. Nxc6 A little better is Bxe7 since the White knight is well-posted on e5. Besides, the capture only helps to promote Black's counter play. Rxc6! 14. Bxe7 Qxe7 15. cxd4 Rfc8 With such a swift mobilization of pieces on the queenside, it is unlikely that a White kingside attack will be able to halt Black's initiative. 16. Nf3 The knight needed to remain here so that it could defend b3 against the invasion of Black pieces on c3 and b4. Qb4 17. Ne5 Rc3 18. Qe1 Recommended is f5: (18. f5 Qxb3 19. fxe6 fxe6 20. Qe2 and White will easily recover the pawn as Rb1 is threatened.) 18... Ne4 19. Bxe4 dxe4 20. Rb1 Bd5 21. Nc4 Bxc4 22. bxc4 Qxc4 23. Rxb6 h6 If 23... Qa4? Qxc3 with a back-rank mate threat. 24. Qf2 ?! Perhaps trying to get the other rook into the game or threatening f5? Rc2 25. Qe1 Qd3 Much stronger was Qa2, threatening Rxc2: (25... Qa2! 26. Qg3 (26. Rf2 Rxf2 27. Qxf2 Rc1+ 28. Qf1) 26... Rc1) 26. Rb1 Re2 27. Rb3?? Rxe1 (27... Rcc2!!) 28. Rxd3 Rxf1+ 29. Kxf1 exd3 30. Ke1 Rc2 31. e4 Re2+ 32. Kd1 Rxe4 33. Kd2 Rxd4 34. Kd1 Rxf4 35. Kd2 Rd4 36. a5 e5 37. Kd1 e4 38. Kd2 Rd5 39. g4 e3+ 40. Kd1 d2 41. h4 e2+ 42. Kxe2 d1=Q+ 43. Kf2 Rd3 44. g5 Qc2+ 45. Ke1 Rd1# 0-1

## Battle of Murfreesboro

The 17<sup>th</sup> Battle of Murfreesboro was held August 22 in Murfreesboro. Sixty-three players participated in the 5-round event. What is unique about this tournament is its scheduling that enables 5 rounds to be played in a single day. The first round is played at 30 minutes; the second round at 60 minutes; and rounds 3-5 are played at 75 minutes. Stevenson and Harris fought to a draw in the 4<sup>th</sup> round while Burnett and Bereolos drew their game in the final round. Thus four players ended up with 4.5 points, resulting in a four-way tie for over-all first place: **Ronald Burnett, Peter Bereolos, Will Stevenson, and Benjamin Harris.**

Roy Manners shares his experience at the tournament with us:

"Floyd, Joe S., Charles, and myself all rode down together. And, we had a blast! We talked and laughed and just enjoyed the beautiful day. We arrived relaxed and ready to play some Chess. Let me tell you from personal experience, that's the way to arrive at a tournament.

"The site was nice! And adequate for the 63 players who participated. The Rutherford County Chess Club

provided free soft drinks, coffee, and water all day long. Plus, they had free donuts for everyone as we arrived and got checked in. That was a nice touch and I was surprised! That sort of courtesy isn't the norm in Tennessee tournaments.

"The TCA should take serious notice. Robert Guthrie is on to something. He's directed over 30 tournaments in Murfreesboro and the attendance is solid and stable, if not growing. He had participants from several states [Alabama, Mississippi, and Wisconsin].

"Jose Singson of Clarksville won 3.5 out of 5. Charles Bloodworth won 3 out of 5. Floyd Parton got 2.5 out of 5, and I won one game. [See Roy's encounter with Expert Stevenson on page 8 for a game that he probably should have won.] It was a real fun day. The Chess, the camaraderie, the whole event was very enjoyable. So we are inviting everyone to come with us next and enjoy yourselves as much as we did."

Adjacent are two photos of Clarksville players in action of the tournament, courtesy of Roy Manners.



Floyd Parton at Murfreesboro (courtesy of R. Manners).



Jose Singson at Murfreesboro (courtesy of R. Manners).

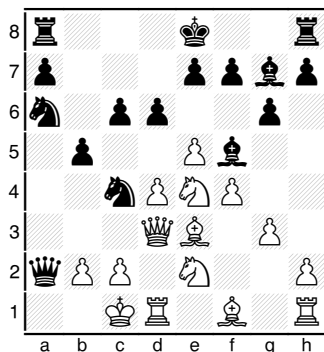
**SPNI Chess Tournament - 1  
Autumn Douthitt - 1339  
Linda Diaz - 1858**

1. d4 Nf6 2. e3 e6 3. f4 c5  
4. c3 Nc6 5. Nf3 d5 6. Bd3  
c4 7. Bc2 b5 8. O-O Bb7 9.  
Nbd2 Bd6 10. Ne5 h5 Qb6 or  
O-O is better. Now e4 is  
very strong, busting the  
center before Black can  
castle. 11. Qe1 This is all  
according to formula, but  
here e4 is strong: 11. e4  
Nxe4 12. Nxe4 dxe4 13. Bxe4  
Qb6 14. a4 a6 15. axb5 axb5  
16. Rxa8+ Bxa8 17. Bf3 +/-  
11... h4 12. Ndf3 Again, e4  
was strong, but Ng5 is  
calling. h3? Ne4 was  
necessary. 13. Qg3 (13. Ng5!  
hgx2 14. Kxg2 O-O (14...  
Bxe5 15. fxe5 Qe7 16. exf6  
gxf6 17. Nf3) 15. Qh4) 13...  
hxg2 14. Qxg2 Qe7 15. Bg6 !?  
This is radical. Since it  
is obvious that Black plans  
to castle queenside, a4  
should be played. And Ng5 is  
still okay. Rf8 (15... Bxe5  
16. fxe5 fxg6 17. exf6 gxf6  
+) 16. Nxc6 Bxc6 17. Ne5  
Bd7 Obviously, Bxe5 is good  
for Black as in the previous  
note and fxg6 is not that  
bad since Black will get to  
pieces for the rook. 18. b3  
?! fxg6 19. Nxc6 Qf7 20.  
Nxf8 Kxf8 -+ 21. bxc4 bxc4  
22. a4 Ne4 23. Bb2 Ke7 24.  
Rf3 Rf8 Better was Rb8 or  
Rh8. 25. Raf1 a6 Preparing  
to take the pawn and follow  
up with Bb5 if attacked by a  
rook. 26. Kh1? Bxa4 27. Bc1  
(27. f5 Qh5 28. Rh3 Qg5 29.  
Qxg5+ Nxc6) 27... Bb3 28.

Qh3 a5 29. Qh4+ Qf6 30. Qg4  
a4 31. f5 e5 32. dxe5 Qxe5  
33. Qh4+ Qf6 34. Qe1 Rh8 35.  
h3 Qe5 36. Qe2 Ng3+ 37. Rxc3  
Qxg3 38. Qg2 Rxh3+ 0-1

**SPNI Chess Tournament - 5  
Emily Tallo - 1606  
Autumn Douthitt - 1339**

1. e4 d6 2. d4 Nf6 3. Nc3 g6  
4. f3 Bg7 5. Be3 c6 6. Qd2 b5  
7. O-O-O Qa5 8. Nge2? Now  
the knight on c3 does not  
have a good retreat square in  
case of b4. Na6 9. g3?? Now  
the a-pawn is truly lost,  
since after the Black queen  
captures on a2, the White  
queen can't capture on b4.  
But Black overlooks this,  
too. Nd7 (9... b4 10. Nb1  
Qxa2) 10. f4 Nb6 11. e5 (11.  
b3 Qa3+ 12. Kb1 b4 13. Na4  
Nxa4 14. bxa4 Be6 15. Nc1  
Nc5!) 11... Nc4 12. Qd3 Bf5  
13. Ne4 Qxa2



14. Qxc4 bxc4 15. N2c3 Qa5  
16. Bxc4 d5 17. Bxa6 Qxa6 18.  
Nc5 Qc8 19. Kd2 O-O 20. h3  
Bxh3 21. Rh2 h5 22. Rd-h1

Bg4 23. Nd3 Bf3 24. Rf1 Be4  
25. Nxe4 dxe4 26. Nf2 Rd8  
27. Rfh1 f5 28. Rh4 c5 29. c3  
Rb8 0-1

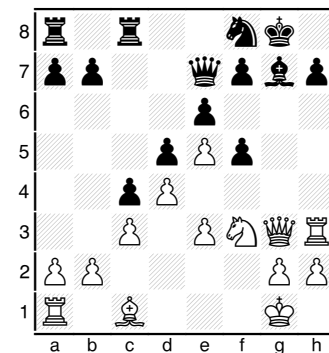
**SPNI Chess Tournament - 2  
Sarah Locker - 357  
Autumn Douthitt - 1339**

1. e4 d6 2. Nf3 Nf6 3. Nc3 g6  
4. d3 Bg7 5. Be2 O-O 6. O-O  
Bg4 7. a4 Nc6 8. h3 Bxf3 9.  
Bxf3 e5 10. Ra3 This is a  
common method that beginners  
use to activate their rooks,  
which are generally better  
off left at home. Nd4 11. Bg4  
c6 Black wisely disdains  
capturing the ineffective  
bishop. 12. b4 d5 Autumn has  
a good feel for opening the  
center to further increase  
her advantage. 13. b5 Qd6  
14. Ra2 Rfd8 15. Ba3 Qc7 16.  
Qd2? (16. bxc6 bxc6 17. Qa1  
Qa5 18. Rb1 And White is  
holding the position but has  
a difficult defensive task.)  
16... dxe4 17. dxe4?? Nf3+  
18. gxf3? Rxd2 19. Bc1 Rd4  
20. a5 Nxc6? The simple h5  
would have won the bishop  
without a trade. 21. hxg4 Qe7  
22. Re1 Qb4 23. Bb2 cxb5 24.  
R(e)-a1 Rd2 25. Rb1 Qd4 26.  
a6 (Of course, 26. Rf1 was  
necessary.) 26... Qxf2+ 27.  
Kh1 Qh2# 0-1

**SPNI Chess Tournament - 6  
Autumn Douthitt - 1339  
Alexandra Wiener - 1685**

1. d4 Nf6 2. e3 g6 3. f4 Bg7  
4. Nf3 d5 5. Bd3 O-O 6. O-O  
Bg4 7. Nbd2 Nbd7 8. Qe1 c5 9.  
c3 Responding b3 would give

the position characteristics  
of a Colle-Zukertort,  
allowing the black-square  
bishop to play a more active  
role. ...c4 This move  
appears to gain space and a  
tempo but in practice just  
gives White the long-term  
advantage with no queenside  
worries. 10. Bc2 Bf5 11.  
Bxf5 gxf5 12. Ne5 e6 13. Rf3  
Ng4 14. Rh3 Queenside play  
with b3 is also possible.  
Ngxe5 Capturing with the  
other knight was better,  
leaving the well-placed  
knight on g4. 15. fxe5 Qe7  
Attacking the White center  
with f6 was more practical.  
16. Nf3 Rfc8 17. Qg3 Nf8



18. e4! fxe4 19. Bg5 (19.  
Bh6! f5 20. exf6 Qxf6 21.  
Ne5 Qe7 22. Rf1 Rc7 23. Rh4  
Ng6 24. Nxc6 hxg6 25. Bg5!  
Qd7 26. Bf6 Qf7 27. Be5 +-)  
19... Qd7 20. Bh6 Ng6 21.  
Ng5 Bxh6? (21... Bh8 22. Rf1  
Rc7 23. Nxf7 Qxf7) 22. Rxh6  
Qb5 23. Rf1 Rc7 24. Rxh7 Rf8  
25. Qh3 f6 26. exf6 Qxb2 27.  
Rxc7 1-0



The Tennessee Tempo is back this year and stronger than ever before. In fact, Team Manager Peter Bereolos has even dared to use the "p"-word - powerhouse! This is because they have two grandmasters at their service since they now have 4-time U.S. Champion GM Shabalov to backup the service of GM Ehlvest, who was annexed last year. Despite the strengthening provided by the grandmasters, the **Tempo** has only won 14.5 of its 36 games played in the league. Shabalov has played in three of their matches and has won 2 of his 3 games. (Shabalov is contracted to play only 5 games.) Ehlvest has played in six of the **Tempo's** matches and has not lost a game.

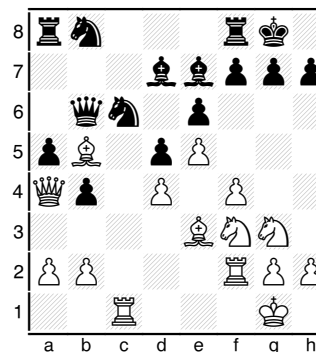
Below is a record of the **Tempo's** activity in the league, and two of their games from their match against the Miami Sharks are presented. Their next match will be November 4 against the Baltimore Kingfishers; and you can watch them online at 8:00 p.m. ET on the Internet Chess Club.

2009 Match Record of the Tennessee Tempo			
Date	Opponent	Color	Score
Sept. 02	Philadelphia Inventors	B	2.5-1.5
Sept. 09	Arizona Scorpions	W	2.0-2.0
Sept. 16	Chicago Blaze	W	1.5-2.5
Sept. 21	Miami Sharks	B	2.0-2.0
Sept. 30	Seattle Sluggers	B	1.5-2.5
Oct. 07	Dallas Destiny	W	1.5-2.5
Oct. 14	Chicago Blaze	B	1.5-2.5
Oct. 21	Seattle Sluggers	W	0.5-3.5
Oct. 28	San Francisco Mech.	B	1.5-2.5

TCN/Fall 2009\_17

**USCL Miami vs Tennessee - 4  
September 21, 2009  
Alejandro Moreno Roman-2331  
John Bick - 2260**

1. e4 e6 2. d4 d5 3. Nc3 Nf6  
4. e5 Nfd7 5. Nce2 c5 6. c3  
Nc6 7. f4 b5 8. Nf3 b4 9.  
cxb4 cxb4 It seems that Nxb4  
would be more consistent,  
keeping pressure on d4 and  
leaving the b-file open for  
action by the rooks. 10. Ng3  
Qb6 11. Be3 Be7 12. Rc1 a5  
Perhaps Ba6 was better,  
freeing the rook to play to  
the c-file in defense and  
doing more to interfere with  
White's castling. 13. Qa4  
Ndb8 14. Bb5 Bd7 15. O-O O-O  
16. Rf2



Nxe5! 17. Bxd7 Nexd7 18.  
Rfc2 Stronger was f5. Bd6  
19. h3 g6 Better is the  
immediate Qa6 followed by  
Nb6, which keeps the rooks  
out, beats back the White  
queen, and obtains a post  
for the knight on c4. 20.  
Nf1 Qa6 +/- Fritz 11  
evaluates Black as being a  
full point up. 21. Ne5  
Necessary was Ne1. Nb6 22.

Qb3 f6! 23. Rc6 (23. Nf3??  
a4) 23... Nxc6 24. Rxc6 fxe5  
Better was Rfd8, keeping  
White's bishop out of the  
game. 25. dxe5 Bc7 26. Rxc7  
Nc4 27. Ng3 Nxe3 28. Qxe3  
Rf7 29. Rxf7 Kxf7 30. f5 Qa7  
Snuffling out counterplay  
and heading to an easily won  
endgame. 31. Qxa7+ Rxa7 32.  
f6 Rc7 White resigns 0-1

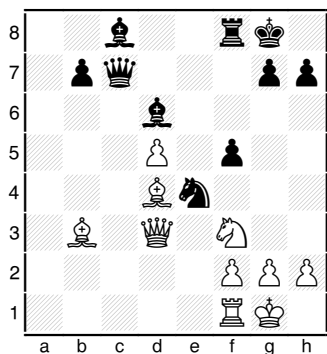
Last year, the Miami Sharks  
tied their match with  
Tennessee. Though the **Tempo**  
had excellent chances of  
winning this year, they  
still couldn't quite get it  
done ....

**USCL Miami vs Tennessee  
September 21, 2009  
Ron Burnett - 2380  
Blas Lugo - 2351  
Result 0-1**

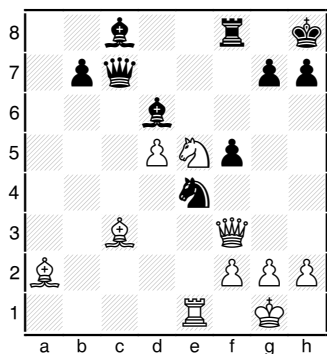
1. Nf3 d5 2. d4 Nf6 3. c4 c6  
4. e3 e6 5. Nbd2 Nbd7 6. Bd3  
Bd6 7. O-O O-O 8. e4 e5 Less  
enterprising and far more  
common is dxe4, which  
maintains the Slav structure  
of the queenside pawns. 9.  
cxd5 cxd5 10. exd5 exd4 11.  
Ne4 Nxe4 12. Bxe4 Nc5 13.  
Bb1 d3 14. b4 Ne4 15. Qxd3  
f5 16. a3 a5 17. Bb2 Also  
advantageous for White is  
b5, but Black can get  
threatening active with Qf6.  
axb4 18. axb4 Rxa1 19. Bxa1  
+/- Qb6 (19... Bxb4 20. Bxg7  
Kxg7 21. Qd4+) 20. Ba2  
Fritz11 prefers Qd4 or Nd2.  
Qxb4 21. Bd4 Qa5 22. Bb3 Qc7  
(continued on next page)

TCN/Fall 2009\_18

Burnett- Lugo, from p. 18



23. Ne5!? A much more dynamic choice than Fritz's idea of Qe3 followed by Rcl. However, Black's accurate move cancels Burnett's try for a brilliancy prize. Nc5 = 24. Qf3 More drawish is Bxc5 followed by Nc4. Kh8 Getting the king off the dangerous diagonal and, thus, really threatening the knight. 25. Re1 Qa5 26. Bc3 Qc7 27. Ba2 Ne4



28. Rxe4?? Confusing his combination. The elements are there but this is not the sequence. Fritz shows the accurate move to be: 28.

Bb4! Bxb4? (28... b5 29. Bxd6 Qxd6 30. Nf7+ Rxf7 31. Rxe4 Bd7 =) 29. Ng6+ hxg6 30. Qh3+ Kg8 31. d6+. 28... fxe4 29. Qxf8+ Bxf8 30. d6 Bxd6! (30... Qxc3 31. Nf7+ Kg8 32. Nh6+ Kh8 33. Nf7+ =) 31. Nf7+ Kg8 32. Nxd6+ Kf8 33. Nxe4 Qe7 34. Bd5 Bf5 35. Ng3 Bg6 and with the knight's activity cancelled, the game is essentially over. 36. Bf3 b5 37. h3 b4 38. Bd4 b3 39. Ne2 Qa3 40. g3 b2 41. Bxb2 Qxf3 42. Nd4 Qd3 43. Ne6+ Ke7 White resigned 0-1

Young-Suich, cont. from p. 10

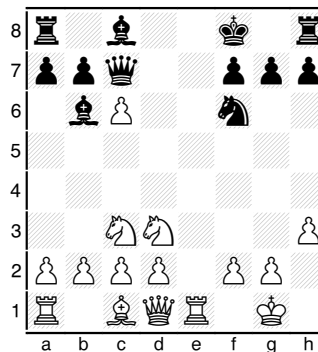
Qe5+ 37. Kf2 Qf6+ 38. Kg3 g6 39. Kh2 Qh4+ 40. Kg1 Qe1+ 41. Kh2 Qe5+ 42. g3 Kg7 43. Qd2 g5 44. Kh3 Kg6 45. Qc2+? It was a likely draw before this exchange. Qf5+ 46. Qxf5+ Kxf5 47. Kg2 Ke4 48. Kf2 Kd3 Fritz declares mate in 38! 49. g4 See the Scholastic Corner (page 21) for more on this endgame. (49. Kf3 f5 50. Kf2 g4 (50... Ke4 51. Kg2 Ke3 Outflanking! (51... f4 ?? 52. gxf4 gxf4 53. Kf2 =) (51... g4 52. Kf2 Kd3 (52... f4 ?? 53. gxf4 Kxf4 54. Kg2 g3 55. Kg1! =) 53. Kf1 Ke3 54. Kg2 Ke2 55. Kg1 Kf3 56. Kh2 Kf2 and White has been outflanked.)) 51. Kf1 Ke3 52. Kg2 Ke2 Outflanking. 53. Kg1 Kf3 54. Kh2 Kf2 55. Kh1 f4) 49... Ke4 0-1

TCN/Fall 2009\_19

Cumberland Co. Summer July 18, 2009

Matthew Donnon - 911  
Luke Weishaar - 500

1. e4 e5 2. Nf3 Nc6 3. Bb5 Nf6 4. Nc3 Bc5 5. O-O Nd4? 6. Nxe5 Nxb5 7. Nxb5 d6 8. Nd3 Bb6 9. h3 c6 10. Nc3 Qc7 11. Re1 d5? 12. exd5+ Kf8 13. dxc6

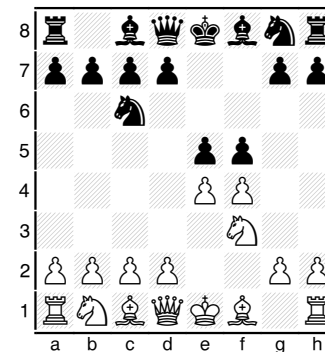


Bxh3!? Realizing that loss of the castling privilege and two pawns gives him little chances of winning, Black goes for the draw. 14. cxb7 (14. gxh3 Qg3+ 15. Kf1 Qxh3+ =) 14... Rb8 15. Qf3 Bg4 16. Qf4 Qxb7 17. a3 h5 18. Kf1 h4 19. Ne5 Qc7 20. Nd5? Maybe he had in mind the better Ne4 or simply stopped looking for more after spotting the forcing Nd5? Nxd5 21. Qxg4 Re8 22. Qf5 (22. Nd7+! Kg8 23. Rxe8+) 22... Nf6 23. d3 Qxc2 24. Re2 Bg5 threatening Bxf6 was better. Qd1+ 25. Re1 Qh5 Better was returning to c2 to put the burden on White to unravel his pieces. White should then continue with 26. Bg5, challenging

Black to see Qxf2!+. 26. Qxh5 Rxh5 27. Nf3 Rxe1+ 28. Kxe1 h3 29. gxh3 Rxh3 30. Ke2 Rh1 31. Ne1 Ba5 32. Bd2 Bxd2 33. Kxd2 g5 34. Rd1 g4 35. Ke2 Kg7 36. d4 Nd5 37. Rd3?? Nf4+ 38. Ke3 Nxd3 39. Kxd3?? Forced was Nxd3. Rxe1 40. Kc4 Rf1 41. d5 Rxf2 42. d6 Rd2 43. Kc5 g3 0-1

TN Open Championship - 2  
John Aristorenas  
John Beck

1. f4 e5 2. e4 Nc6 3. Nf3 Guarding against the murderous Qh4+ and trying to steer the Bird Opening into the King's Gambit. f5!?

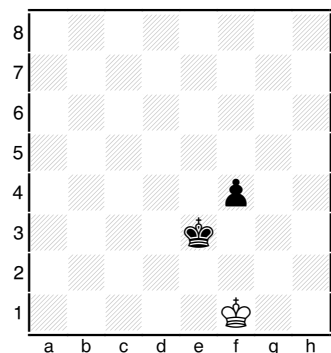


4. Nxe5?? (4. exf5) 4... Nxe5 5. fxe5 Qh4+ 6. g3 A rook perishes regardless of White's response: 6. Ke2 Qxe4+ 7. Kf2 Bc5+ 8. d4 Bxd4+ 9. Kg3 Bxe5+ 10. Kf2 Bd4+ 11. Kg3 f4+ 12. Bxf4 Qg6+ 13. Kf3 (13. Qg4 Qxg4+ 14. Kxg4 Bxb2) 13... Qh5+ 14. g4 Qd5+ 6... Qxe4+ 7. Qe2 Qxh1 8. d4 and Black won easily 0-1

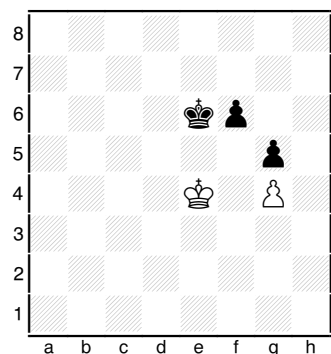
TCN/Fall 2009\_20

## Scholastic Corner: Outflanking

Diag. 1 is critical to know. The outcome of the game is determined by who has the opposition: White to move draws with **Ke1**; Black to move wins by assuming the opposition with **Kf3**.



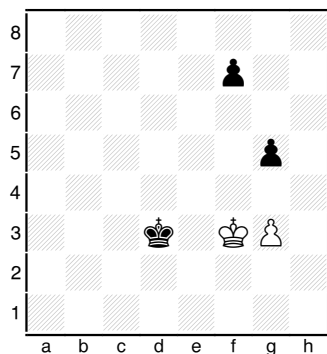
Victor Suich's game from the Tenn. Open (see page 10) introduces us to another concept which we need to have a handle on: outflanking. Below is one of the 12 typical positions where Black has a backward



**Black plays and draws.  
White plays and loses.**

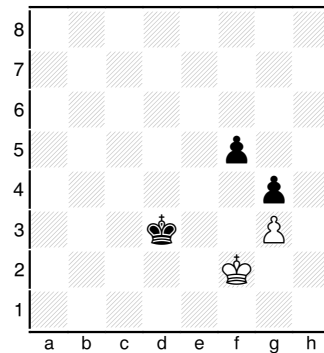
bishop-pawn or center pawn with the outcome depending upon whether he can assume the opposition and outflank. With White to move, Black can easily outflank him. If **1. Kd3 Kd5 2. Ke3 Ke5 3. Kf3 Kd4 4. Kf2 Ke4 5. Kg3 Ke3** achieves the flanking maneuver and win of the g-pawn. If **1. Ke3 Ke5 2. Kf3 Kd4** transposes to the above; and if **1. Kf3 Kd5 2. Ke3 Ke5 3. Kf3 Kd4** also transposes to the first variation. On the other hand, if **1. Kd4**, then **f5!** immediately wins since Black can take the opposition. But if it is Black's move in the original diagram, White can always assume the opposition and draw.

Since his opponent resigned after playing **49. g4**, we can assume that he knew he would be outflanked - especially since Suich's king had an even more favorable position. But what could have happened on **49. Kf3** is:



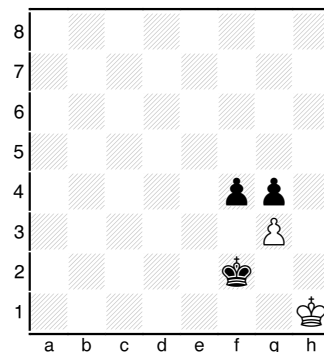
**Possibility in Young-Suich  
TCN/Fall 2009\_21**

**49. Kf3 f5 50. Kf2 g4** and achieves the below diagram. Note that White is



**Diag. 4 After 50... g4.**

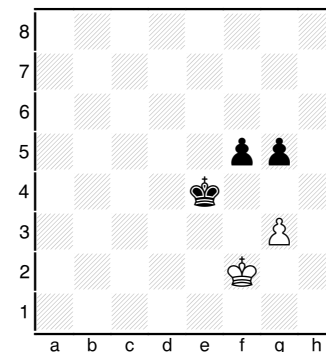
significantly worse than our theoretical discussion because Black's pawns are more advanced and his king has already penetrated. Now after **51. Kf1 Ke3 52. Kg2 Ke2** Outflanking. **53. Kg1 Kf3 54. Kh2 Kf2 55. Kh1 f4** (see below diagram). Of



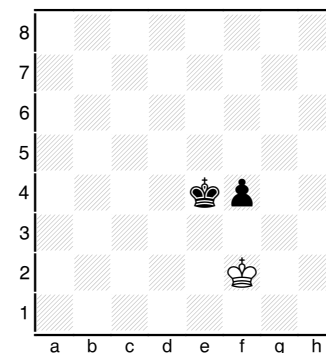
course Black could have just captured the pawn, also.

Now let us give Black a chance to go wrong! If from **Diagram 4**, Black had played **50... Ke4** instead of **g4**,

Diagram 6 would have result:



Now if White plays **51. Kg2 f4??** would be a horrible mistake for after **52. gxf4 gxf4 53. Kf2** White easily draws because Black can't assume the opposition as in our first diagram. See the below diagram.

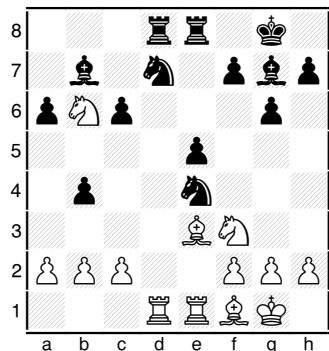


But after **51. Kg2** Black can again get back on the winning track with **51... g4!** Now after **52. Kf2 Kd3** transposes back into **Diagram 4** and wins easily by outflanking. It pays to know your endgames!

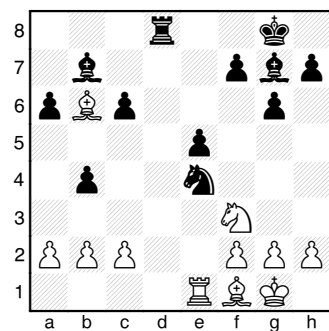
TN Championship - 4

Patrick Tae  
Ronald Burnett

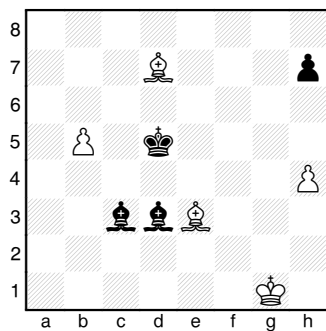
1. e4 g6 2. d4 d6 3. Nc3 Bg7  
4. Be3 c6 5. Qd2 b5 6. Bd3  
Nd7 7. Nf3 Qc7 8. O-O Ngf6  
9. Rad1 O-O 10. Rfe1 a6 11.  
Bh6 e5 12. dxe5 dxe5 13. Be3  
Bb7 14. Bf1 Rad8 15. Qd6  
Qxd6 16. Rxd6 b4 17. Na4  
Nxe4 18. Rdd1 Rfe8 19. Nb6  
Burnett has consumed only 5  
minutes since he played Qd6,  
which indicates that the  
next moves were expected.



**Nxb6?! Much less complicated**  
is the simple Nf6 or Nc5.  
Now White assumes an  
initiative. 20. Rxd8 Rxd8  
21. Bxb6



Rb8 Tae took 8 minutes to  
see this rejoinder but has,  
himself, been moving  
briskly. 22. Rxe4 c5 23. Rc4  
Bxf3 24. Bxc5 Bd5 25. Rxb4  
Rc8 26. Bd6 f5 27. Rb8 Rxb8  
28. Bxb8 Bxa2 29. Bxa6 e4  
30. c3 Kf7 31. Ba7 Ke6 32.  
g3 Kd5 33. Be3 Bc4 34. Bb7+  
Kd6 35. Bf4+ Kc5 36. g4 Bd5  
37. Be3+ Kd6 Already Black  
is near the draw, having  
properly hustled his king  
into the action. 38. Ba6 Bf6  
39. gxf5 gxf5 40. Bb5 Be5  
41. Ba4 +/- Ba2 42. Bc2 Be6  
43. Bd2 Bc4 44. b3 Be2 45.  
b4 Kd5 46. Bb3+ Bc4 47. Ba4  
Bd3 48. Bd7 f4 49. h4 e3 50.  
fxe3 fxe3 51. Bxe3 Bxc3 52.  
b5



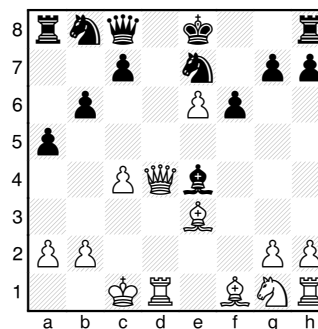
**Bxb5 Excellent alertness!**  
Black recognizes that he has  
a drawn endgame because  
White will be left with the  
wrong colored bishop to  
queen his remaining pawn.  
53. Bxb5 Bd4 54. Bxd4 Kxd4  
55. h5 Ke5 56. Bd3 Kf6 57.  
Kg2 Kg7 58. Kf3 h6 59. Kf4  
Kh8 1/2-1/2 By tying the  
2008 co-champion, Patrick  
proved that he is worthy.

TCN/Fall 2009\_23

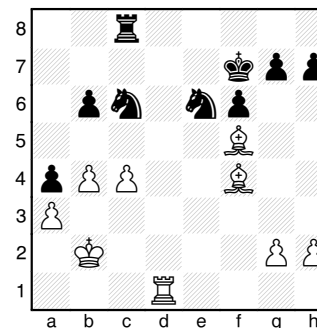
TN Open Championship - 3

John Beck  
Ronald Burnett  
Result 1/2-1/2

1. d4 e6 2. c4 b6 3. e4 Bb7  
4. Nc3 Bb4 5. f3 Ne7 6. Qb3  
a5 7. Be3 d5 8. O-O-O dxe4  
9. fxe4 If 9. Nxe4, Nf5  
favors Black. Bxc3 10. Qxc3  
Bxe4 11. d5 f6 Fritz11  
thinks Black is doing well  
if 11... exd. 12. dxe6 Qc8  
13. Qd4



**Bf5 (13... Qxe6! 14. Qd8+**  
Kf7 15. Qxh8 Nd7 -+) 14. Nf3  
**Nbc6** Black would still do  
better to play Qxe6, as  
Fritz shows it to be a draw:  
14... Qxe6 15. Qd8+ Kf7 16.  
Qxh8 Qe4 17. Bd3 Qxe3+ 18.  
Rd2 Bxd3 19. Re1 Qf4 = 15.  
**Qd7+ Qxd7 16. Rxd7 Rc8 17.**  
**Bf4 Bxe6 18. Rxc7 Kf7 19. b3**  
**= Rhd8** Better was g5. 20.  
Rxc8 Rxc8 21. Kb2 Nb4 22. a3  
Na6 23. Nd4 Bd7 24. Bd3 Nc5  
25. Bc2 Bc6 A little better  
was Ng6 followed by Ne5. 26.  
Nxc6 Nxc6 27. Rd1 +/- a4 28.  
b4 Ne6 29. Bf5



**Ke7? (29... Ne7!) 30. Bd6+ !**  
**Kf7 31. Bg3 Ke7 32. Rd6**  
White has an overwhelming  
advantage, according to  
Fritz (2.7). Ncd8 33. Rxb6  
Rxc4 34. Bc2 Better was Ra6.  
h5 35. Bxa4 h4 36. Bd6+ Kf7  
37. Bb3 Better is Bb5 where  
both bishops can assist with  
queening by restricting  
Black's pieces. Re4 38. a4  
Ke8 39. a5 Re2+ 40. Ka3 Re3  
41. Bc5 ?! Passed pawns must  
be pushed! (41. a6 Nd4  
(41... Nc6 42. Rxc6 Nd4 43.  
Rb6 Nxb3 44. Bf4 Rd3 45.  
Rb8+ Kf7 46. a7) 42. a7)  
41... Nxc5 42. bxc5 Kd7 43.  
a6 Nc6 44. Kb2?! Since White  
had sufficient time, it is  
unclear why he didn't simply  
push the pawn. (44. a7 Nxa7  
45. Rb7+ Kc6 46. Rxa7 Kxc5  
47. Rxg7) 44... Re2+ 45. Kc3  
Re5 46. Ba4 Rxc5+ 47. Kb3  
Ra5!? 48. Bxc6+ Kc7 49. Rb5  
Rxa6 50. Bf3 g5 51. h3 Kd6  
52. Kc4 Ra4+ 53. Kd3 Rf4 54.  
Bg4 Ke7 55. Rd5 Kf7 56. Bf5  
Rf2 57. Be4 Ke6 58. Ke3 Rf4  
59. Rd4 Ke5 60. Rd5+ Ke6  
This endgame may be an  
arduous win. 1/2-1/2

TCN/Fall 2009\_24

**TN Open Novice – 5**

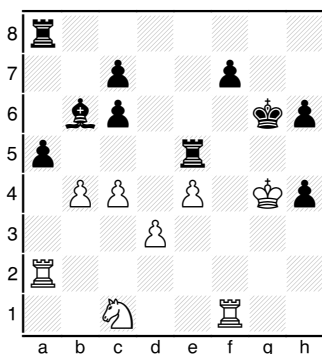
**Donnie Douglas – 1016**

**Kevin Hong – 814**

1. e4 e5 2. Nf3 Nc6 3. Bb5 Bc5 4. Bxc6 dxc6 5. O-O Nf6 6. d3 (6. Nxe5 Nxe4 7. Qe2 Qd5 8. Nd3 O-O =) 6... Bg4

Now that Black has won the two bishops, he shouldn't return the white-squared one so readily. Hence, Qe7 is best for protecting the pawn. 7. Bg5 O-O 8. h3 Bxf3 9. Qxf3 h6 10. Bxf6 Qxf6 11. Qxf6 gxf6 12. Nc3 Rad8

Black needs to step back and assess where he might be able to get an advantage. Upon doing this, he should see that play down the g-file is indicated. Hence he should consider doubling rooks on the g-file. 13. g4 Rfe8 14. Kg2 Kh7 15. f4 Kg6 16. h4 Rd7 17. Ne2 Rg8 18. Kf3 Better is Ng3. Re7 19. c4 This creates an unnecessary weakness on d3. a6 20. a4 b5 21. b3 bxa4? Voluntarily splitting his pawns and giving White targets. Now White is better. 22. Rxa4 Rd7 23. Nc1 Ra8 24. Ra5 Much stronger is b4, potentially shutting the bishop out of the game while threatening b5 to win a pawn. Bb6 25. Ra2 a5 26. g5 Again, b4 is very strong. Now Black has drawing chances. fxg5 27. fxe5?! gxh4 Better is Bd4. 28. Kg4 Re7 Better is Re8, unpinning the rook. 29. b4 Rxe5 Better is c5 or Be3. Now White can entomb the bishop with c5.



30. Kxh4? Of course, c5, which: 1. buries the bishop, 2. wins the a-pawn and, 3. will probably later result in win of the bishop after doubling on the a-file. Rg5 31. d4?? Bxd4 32. Nb3 Bf6! 33. bxa5 Rf5+ 34. Kg3 Rxf1 35. a6 Re1 36. Nd2 Ra1 37. Rxa1 Bxa1 38. e5 Rxa6 It was better to take the pawn with check, first. 39. Kf4 Ra4 40. Ne4 Rxc4 41. e6 fxe6 42. Ke3 Rxe4+ 43. Kxe4 h5 44. Kf3 c5 and White went on to win. 1-0

**TN Championship – 3**

**Kenneth Turner – 1932**

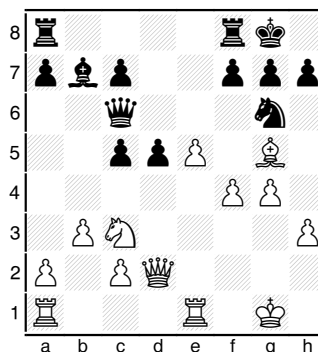
**David Justice – 2096**

This is one of the nice games that co-Champion David played to propel himself into contention for the championship.

1. e4 e6 2. Nf3 d5 3. exd5 exd5 4. d4 Nc6 5. Bb5 Better was Bd3, targeting the kingside. Bd6 6. O-O Nge7

TCN/Fall 2009\_25

7. Re1 O-O 8. h3 Ng6 9. Bxc6 Better was Nc3 or Bg5. bxc6 10. b3 Qf6 11. Bg5 Qf5 12. g4 ?! This is a serious weakening of the light squares on the kingside, especially in light of having swapped off his bishop. Qd7 13. Ne5 Bxe5 14. dxe5 c5 15. Nc3 Bb7 16. Qd2 Qc6 17. f4?



This traps the bishop as well as further weakens the white squares. Better is Rad1 or Bf4. h6 18. f5 d4 19. Ne4 Nxe5 The check at f3 is threatened. 20. Qf4 hxg5 21. Qxe5 Rfe8 22. Qxc5 Rxe4 0-1

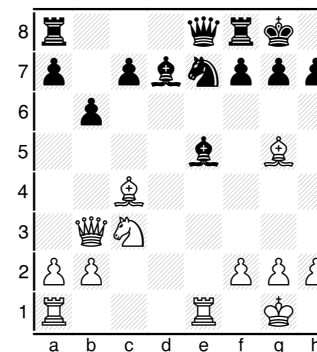
**TN Championship – 3**

**Ronnie Barnes – 1664**

**Paul Justice – 1336**

1. e4 e5 2. Nf3 Nc6 3. d4 exd4 4. c3 Be7 Black rewards White's gambit offer by playing very passive. Better was d5. 5. cxd4 d6 6. Nc3 Bg4 7. Be2 Bd7 Black is taking too many liberties to already have a compromised position, since his pieces

are cramped and White has a dangerously mobile center. 8. O-O Bf6 9. Be3 If Nd5, Nce7 holds Black's fragile position together. Nge7 10. e5?! Enterprising but probably overly-optimistic. dxe5 11. dxe5 Nxe5 12. Nxe5 Bxe5 13. Qb3 b6 14. Bc4 O-O 15. Bg5 Qe8 Black should use h6 to break the pin. 16. Rfe1



Bd6 ?? (16... Ng6 17. Nd5 (17. f4 Bd4+) 17... Ba4 (gaining a tempo to allow his queen to get out of the pin) 18. Qd3 Qd7 19. Ne7+ Nxe7 20. Qxd7 Bxd7 21. Rxe5 Ng6 =/+ 17. Bxe7 Bxe7 18. Nd5 Be6 19. Nxc7 Bxc4 20. Qxc4 Rc8 21. Nxe8 Rxc4 22. Rxe7 a5 23. Kf1 a4 24. Rae1 h6 (24... Rc2 25. R1e4 b5 26. Rb4) 25. Rc7 Rxc7 26. Nxc7 Rd8 27. Re8+ Rxe8 28. Nxe8 Kf8 29. Nc7 Ke7 30. Nd5+ Kd6 31. Nxb6 a3 32. Nc4+ Kc5 33. Nxa3 f6 34. Ke2 g6 35. Ke3 f5 36. Nc2 h5 37. h4 Kd5 38. f4 Kc5 39. a4 Kd6 40. Kd3 Kc6 41. b4 Kb6 42. Nd4 1-0

TCN/Fall 2009\_26

**TN Open Novice – 2**

**Andrew Hall – 575**

**Alex Perhac – UNR**

1. e4 e6 2. d4 d5 3. exd5 exd5 4. c4 Nf6 5. Nf3 Nc6 Even better is Bb4+. 6. cxd5 Nxd5 With this strongly posted knight, Black is slightly better. 7. Bg5 Better was Bb5. Now Black has a real advantage, being also able to continue with Bb4+ if he wishes. Be7 8. Nbd2?? Bxg5 9. Nxg5 Qxg5 10. Qe2+ Be6 11. Nf3 Qe7 12. Qb5 O-O-O 13. g4?? After neglecting castling with this incautious move, White is doomed. Bxg4+ 14. Kd1 Bxf3+ 15. Be2 Bxh1 Even more convincing is Nxd4. 16. Bf1 Rhe8 17. Kd2 Qg5+ 18. Kd3 Nf4+ 19. Kc4 Rxd4+ 20. Kc3 Qxb5 21. Bxb5 Ne2+ 22. Bxe2 Rxe2 23. Kb3 Bd5+ 24. Kc3 Rxf2 (24... Red2 25. Re1 R4d3#) 25. Rc1 Rxh2 26. Rc2 Rxc2+ 27. Kxc2 h5 28. b3 h4 29. Kb2 h3 30. a3 h2 31. a4 h1=Q 32. Ka3 Qa1# 0-1

**TN Open Championship – 5**

**Robert Presswood**

**Joe Hawks**

1. c4 e5 2. g3 b6 3. Bg2 Nc6 4. Nf3 Bb7? 5. Nxe5 Qf6 6. Nf3 Better was Nxc6 because Black can effectively play Nd4 after this retreat. O-O-O 7. Nc3 h6 8. d4? g5 (8... Nxd4!) 9. d5 Ne5 10. Nxe5 Qxe5 11. Be3 f5? The ugly Bc5 was better. 12. Qd4? Bd4 wins the rook. Qxd4 13. Bxd4 Rh7 14. a3 h5 15.

h4 g4 16. e3 Re8 17. O-O Be7 18. b4 Nf6 19. c5 d6? 20. cxd6 (20. c6 Ba8 21. b5 and the bishop is entombed) 20... Bxd6?? 21. Bxf6 a6 22. Rac1 Kd7 23. Ne2 Rf7 24. Bb2 Be5 25. Bxe5 Rxe5 26. Nf4 Kd6 27. Rfd1 Rh7 28. Rc3 Ree7 29. Rdc1 b5 30. Ne6 Bxd5 31. Bxd5 Kxd5 32. Nxc7+ Ke4 33. Kg2 Rh6 34. Rc6 Rhh7 35. Nxa6 Ra7 36. Rlc5 Rd1 creates a forced mate. Rhd7 37. Rxb5 Rd2 38. Nc5+ Kd5 39. Ra6 Rxa6 40. Nxa6+ Kc4 41. Rxf5 Kd3 42. Rd5+ Ke2 43. Rxd2+ Kxd2 44. b5 1-0

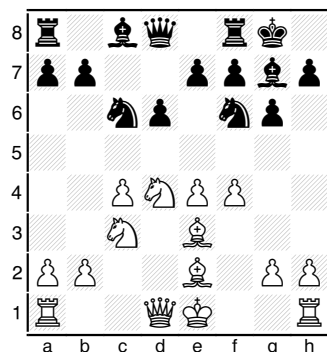
**TN Open Championship – 2**

**Ronald Burnett**

**Bill Hall**

1-0

1. c4 Nf6 2. Nc3 g6 3. e4 d6 4. d4 Bg7 5. f4 O-O 6. Nf3 c5 7. Be2 cxd4 8. Nxd4 Nc6 9. Be3



**Ne8** The accepted line is Ng4 but Bg4 may also be playable. For sure, Ng4 is better than the game continuation: 9... Ng4 10. Bxg4 Bxd4 11. Bxd4 Bxg4

TCN/Fall 2009\_27

12. Qd2 +/- 10. O-O Nc7 11. Qd2 f5 Trying to undermine White's center and keep White's black-squared bishop constrained. However, it really weakens Black's pawn structure and gives White new options in the center. 12. Rad1 Nxd4 13. Bxd4 e5? 14. Bxe5 dxe5 15. Qxd8 Rxd8 16. Rxd8+ Kf7 17. exf5 gxf5 18. Bh5+ Ke7 19. Rg8 Bh6 20. Nd5+ Nxd5 21. Re8+ and Black lost on time. 1-0

**TN Open Championship – 1**

**Todd Andrews – 2360**

**Ali H. Alataiwi – 1830**

1. d4 d5 2. c4 c6 3. Nf3 dxc4 4. e3 b5 5. a4 Bb7 6. b3 cxb3 7. axb5 e6 8. Qxb3 Bd6 9. Nbd2 Ne7 10. Bd3 O-O 11. O-O cxb5 12. Qxb5 Bxf3 13. Nxf3 Ng6?? (13... Qc7? 14. Bxh7+ Kxh7 15. Qh5+ Kg8 16. Ng5) 14. Be4 a6 15. Qb7 Nd7 16. Qxa8 Qxa8 17. Bxa8 Rxa8 18. Bd2 h6 19. Rfc1 Ne7 20. Rc2 f6 21. Ne1 Nb8 22. Nd3 Nec6 23. Nc5 Bxc5 24. Rxc5 Kf7 25. Rac1 Ne7 26. Rc7 a5 27. Rb7 Ke8 28. Bxa5 Rxa5 29. Rxb8+ Kd7 30. Rb7+ Kd6 31. g3 g6 32. e4 Ra8 33. e5+ 1-0

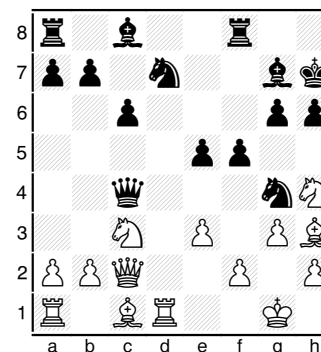
**TN Open Championship – 3**

**Peter Suich**

**Peter Bereolos**

1. Nf3 Nf6 2. c4 g6 3. g3 Bg7 4. Bg2 O-O 5. O-O d6 6. d4 Nbd7 7. Nc3 e5 8. dxe5 dxe5 9. Bg5 h6 10. Be3 The bishop maneuver did create a slight weakening of Black's

kingside pawns and gives White a target, but this is nothing to be too hopeful about because the dxe5 variation is not that enterprising. c6 11. Qc1 Kh7 12. Rd1 Qe7 +/- If Ng4, then Bc5. 13. Qc2 Ng4 14. Bc1 This was the best move. f5 15. Nh4 With e4 or h3 White could have maintained his tiny plus. Qc5 Also okay is e4. 16. e3 Qxc4 ?! Fritz claims that e4 is better. 17. Bh3



**Nc5?! (17... e4! 18. Bf1 {18. Bxg4 fxg4 19. Qxe4 Qxe4 20. Nxe4 Ne5 21. Nc3 g5 22. Ng2 Be6 and the sweeping bishops and White's holey kingside give Black a strong plus.} 18... Qc5 19. Be2 Nde5 --) 18. b3 Qf7 19. Ba3 b6 20. Bxc5 bxc5** Fritz recommends killing the knight and following up with Ne4 to win the c-pawn. 21. Rd6 Bf6 22. Ng2 Better was either Bxg4 or Rad1. Be7 Recommended is Qc7. 23. Rxc6 Nf6 24. e4 fxe4 25. Rxc8 Raxc8 26. Bxc8 Rxc8 27. Nxe4 1/2-1/2

TCN/Fall 2009\_28

63<sup>rd</sup> ANNUAL TN OPEN 2009 OPEN SECTION Wall Chart

Name/State ID	Rate	Rnd 1	Rnd 2	Rnd 3	Rnd 4	Rnd 5
1. Burnett, Ronald TN 12093120	2378	B 28	W 7	B 8	B 2	W 9
2. Tae, Patrick John TN 12780648	2219	B 32	W 15	B 4	W 1	B 3
3. Justice, David TN 12814183	2096	B 13	W 4	B 27	W 8	W 2
4. Andrews, Todd D TN 12583055	2360	W 20	B 3	W 2	W 27	B 11
5. Bereolos, Peter TN 11414966	2329	B 31	W 9	B 11	W 14	B 6
6. Suich, Joshua TN 12707426	2178	W 22	B 11	W 9	B 20	W 5
7. Hall, Bill TN 12397673	2093	W 34	B 1	W 12	B 28	W 15
8. Bick, John D LA 12544520	2260	W 17	B 26	W 1	B 3	W 12
9. Phay, Gainer Gavin TN 12828988	2037	W 23	B 5	B 6	W 16	B 1
10. Kantor, Alan TN 10118506	2012	HALF	B 27	W 17	W 18	B 20
11. Suich, Peter D TN 12779311	1989	B 24	W 6	W 5	B 17	W 4
12. Kumar, Vikas Shrey TN 12920966	1719	B 33	W 18	B 7	W 15	B 8
13. Winstead, Blake KY 13606042	1653	W 3	B 35	W 20	B 30	W 27
14. Patty, John TN 12397977	2200	B 21	W 16	HALF	B 5	---
15. Salter, Josh TN 12890290	1934	W 29	B 2	W 32	B 12	B 7
16. Amback, Robert KY 12837869	1881	W 25	B 14	W 23	B 9	W 17
17. Sloan, Kenneth AL 10163561	1763	B 8	W 24	B 10	W 11	B 16

OPEN SECTION WALL CHART, cont.

18. Barnes, Ronnie TN 10246369	1654	HALF	B 12	W 25	B 10	W 28
19. Presswood, Robert TN 12031640	1641	W 26	B 20	HALF	B 34	W 31
20. Alataiwi, Ali Hamd TN 13746224	1830	B 4	W 19	B 13	W 6	W 10
21. Winstead, Ryan KY 13606057	1704	W 14	B 25	W 30	B 24	W 23
22. Hughes, James D TN 12222390	1678	B 6	W 30	HALF	B 23	W 24
23. Burdett, Terence G TN 11336027	1639	B 9	W 31	B 16	W 22	B 21
24. Fu, Jason TN 13103964	1639	W 11	B 17	B 31	W 21	B 22
25. Justice, Paul TN 12844683	1336	B 16	W 21	B 18	W 29	- 34
26. Aristorenas Jr, Juan TN 10243301	2071	B 19	W 8	HALF	---	---
27. Turner, Kenneth G MS 12470290	1932	B 30	W 10	W 3	B 4	B 13
28. Johnson, Michael C KY 12836501	1861	W 1	B 34	HALF	W 7	B 18
29. Long, Stephen TN 12478019	1548	B 15	W 32	W 34	B 25	W 30
30. Schafer, Jacob 12913914 Plaque	1500	W 27	B 22	B 21	W 13	B 29
31. Hawks, Joseph C TN 12793480	1785	W 5	B 23	W 24	W 35	B 19
32. McCormick, Alan TN 12778990	1733	W 2	B 29	B 15	---	---
33. Wheeler, Jerry T TN 10242126	2214	W 12	---	---	---	---
34. McDonald, Richard TN 14213948	1651	B 7	W 28	B 29	W 19	- 25
35. Back, Alecia N TN 13492174 House	246	---	W 13	---	B 31	---

63<sup>rd</sup> ANNUAL TN OPEN 2009 AMATEUR U1600 Wall Chart

Name/State ID	Rate	Rnd 1	Rnd 2	Rnd 3	Rnd 4	Rnd 5
1. Suich, Victor W TN 12732019	1537	W 12	B 11	W 7	W 2	B 3
		1.0	1.5	2.5	3.5	4.0
2. Van Der Meer, B Wi TN 12552192	1487	W 6	B 14	W 8	B 1	B 5
		1.0	2.0	3.0	3.0	4.0
3. Hydzik, Robert J TN 12468777	1566	B 5	W 8	B 9	W 11	W 1
		1.0	1.0	2.0	3.0	3.5
4. Wadhawan, Sanchit TN 13399514	1434	HALF	W 5	B 13	W 12	B 7
		0.5	0.5	1.5	2.5	3.5
5. Maddox III, John TN 14090203	1383	W 3	B 4	BYE	B 8	W 2
		0.0	1.0	2.0	3.0	3.0
6. Davis, William S TN 12484473	1252	B 2	W 17	HALF	W 9	B 14
		0.0	1.0	1.5	2.0	3.0
7. Blair, Benjamin TN 11071511	1502	B 16	W 9	B 1	W 14	W 4
		1.0	1.5	1.5	2.5	2.5
8. Thomas, Richard L NC 12642264	1447	W 13	B 3	B 2	W 5	HALF
		1.0	2.0	2.0	2.0	2.5
9. Long, Michael TN 12478020	1412	W 15	B 7	W 3	B 6	W 10
		1.0	1.5	1.5	2.0	2.5
10. Hardy, Joshua TN 13944375	1150	W 11	B 12	B 17	W 16	B 9
		0.0	0.0	1.0	2.0	2.5
11. Gilbreath, Thomas AL 12621562	1453	B 10	W 1	HALF	B 3	---
		1.0	1.5	2.0	2.0	2.0
12. Qin, Alexander TN 13298561	1281	B 1	W 10	HALF	B 4	W 13
		0.0	1.0	1.5	1.5	2.0
13. Carter, Cary 13120863 Plaque	1091	B 8	W 16	W 4	B 17	B 12
		0.0	0.5	0.5	1.5	2.0
14. Pleinis, John TN 13906464	1085	BYE	W 2	B 16	B 7	W 6
		1.0	1.0	2.0	2.0	2.0
15. Gill, Kayla Ann TN 13502240 House	384	B 9	---	---	---	W 16
		0.0	0.0	0.0	0.0	1.0
16. Pond, Lawrence F TN 12580170	1255	W 7	B 13	W 14	B 10	B 15
		0.0	0.5	0.5	0.5	0.5
17. Back, Brandon C TN 13686197 House	315	---	B 6	W 10	W 13	---
		0.0	0.0	0.0	0.0	0.0

63<sup>rd</sup> ANNUAL TN OPEN 2009 NOVICE U1200 Wall Chart

Name/State ID	Rate	Rnd 1	Rnd 2	Rnd 3	Rnd 4	Rnd 5
1. Hoyos, Jordan TN 13770025	882	B 19	W 9	W 2	B 6	W 5
		1.0	2.0	3.0	4.0	5.0
2. Hong, Kevin TN 13787313	1016	B 3	W 11	B 1	W 4	B 8
		1.0	2.0	2.0	3.0	4.0
3. Perhac, Alex TN 21017803	575	W 2	B 21	W 15	B 13	W 6
		0.0	1.0	2.0	3.0	4.0
4. Pyle, William Earl TN 12870745	793	B 13	B 10	W 9	B 2	W 14
		1.0	2.0	2.5	2.5	3.5
5. Xue, Albert Shaoya TN 13500641	1104	B 14	W 7	B 6	W 11	B 1
		1.0	2.0	2.0	3.0	3.0
6. Grohn, Larry TN 12554623	1015	W 15	B 8	W 5	W 1	B 3
		1.0	2.0	3.0	3.0	3.0
7. Weishaar, Luke TN 14191493	956	W 12	B 5	W 14	B 8	W 9
		1.0	1.0	2.0	2.0	3.0
8. Douglas, Donnie 14232672 Plaque	814	B 20	W 6	B 16	W 7	W 2
		1.0	1.0	2.0	3.0	3.0
9. Wallace, Aaron TN 12982112	1093	W 16	B 1	B 4	W 10	B 7
		1.0	1.0	1.5	2.5	2.5
10. Hutchison, Earl TN 14190620	1015	B 17	W 4	HALF	B 9	W 16
		1.0	1.0	1.5	1.5	2.5
11. Lillis, Austin TN 13747364	829	W 21	B 2	W 20	B 5	W 13
		1.0	1.0	2.0	2.0	2.5
12. Sandoval, Elijah TN 14232687	502	B 7	W 14	B 21	W 16	B 17
		0.0	0.0	1.0	1.5	2.5
13. Hammett, Jon TN 12931306	1161	W 4	B 17	HALF	W 3	B 11
		0.0	1.0	1.5	1.5	2.0
14. Weishaar, Rachel 14222716 Plaque	759	W 5	B 12	B 7	W 19	B 4
		0.0	1.0	1.0	2.0	2.0
15. Atkins, Ruben 14232666 Plaque	551	B 6	W 20	B 3	W 21	B 19
		0.0	0.0	0.0	1.0	2.0
16. Brindisi, Frank TN 12736464	681	B 9	W 19	W 8	B 12	B 10
		0.0	1.0	1.0	1.5	1.5
17. Hong, Will 13862106 Plaque	546	W 10	W 13	B 19	B 20	W 12
		0.0	0.0	0.0	1.0	1.0

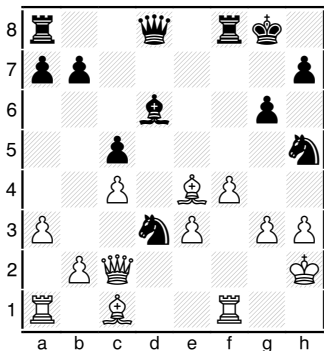
## Tenn. Chess Association 2008-2010 Board of Directors

### TN OPEN NOVICE SECTION WALL CHART, cont.

Name/State ID	Rate	Rnd 1	Rnd 2	Rnd 3	Rnd 4	Rnd 5
18. Back, Alecia N 13492174 House	246	---	---	---	---	B 21
19. Sandoval, Jerry 14232693 Plaque	101	W 1	B 16	W 17	B 14	W 15
20. Weishaar, Kayla 14232761 House	nnnn	W 8	B 15	B 11	W 17	---
21. Hall, Andrew TN 14244832	nnnn	B 11	W 3	W 12	B 15	W 18

**TN Open Championship - 4**  
**Victor Suich - 1648**  
**B. W. Van Der Meer - 1463**

The Champions of the Amateur Section battle it out. **1. Nf3 d5 2. g3 c5 3. Bg2 Nc6 4. O-O e5 5. d3 Be6 6. Nbd2 f5 7. c4 Nf6** Black would do better with d4, which would keep White's pieces congested. **8. cxd5 Bxd5 9. Nc4** Playable is e4 but White wants to maintain play along the h1-a8 diagonal. **Bxc4 10. dxc4 e4 11. Nd2 =** Better is Ng5 which would leave the pieces freer. **Be7 12. a3 O-O 13. e3** White might wish to play f3 to increase the range of his bishop but Qd4+ ruins that idea. On the other hand, this move doesn't do much for either of his bishops and Black can now target the d3 square. **Ne5 =/+ 14. Qc2 Nd3** Also good is Qd3. **15. h3 Bd6 16. f4?** A radical means of stopping Be5, but it is tactically flawed. At the least, it constricts White's



position. **Nh5?!** (16... exf3 17. Bxf3 (17. Rxf3?? Ne1) 17... Nxc1) **17. Kh2 g6 18. Nxe4!? fxe4 19. Bxe4** (See **DIAGRAM**) **Bxf4??** (19... Nxc1 20. Bxb7 Rb8 21. Bd5+ Kg7 22. Raxc1 Qb6 23. Rf2 Qb3 =/+ ) **20. exf4 Nxc1 21. Raxc1 Qc7 22. Bd5+ Kh8 23. Qc3+ Rf6?? 24. Rce1?** (24. g4!) **24... h6 25. Re6 Raf8 26. Rfe1 Qd8 27. Rxf6** Better is Re7 but White still retains some of his great advantage. **Nxf6 28. Re6** Better is Bxb7. **Kh7 29. Qe5 Nxd5 30. cxd5 Rf5?? 31. Re7+ Kg8 32.**

**Re8+ Qxe8 33. Qxe8+ Kg7 34. d6 Rd5 35. Qe7+ Kh8 36. d7 Rd2+ 37. Kg1 1-0**

TCN/Fall 2009\_33

#### PRESIDENT:

Malcolm Estrada  
 123 Annview LN  
 Harrison, TN 37341  
 H: (423) - 326-1446  
 e-mail: straightleg111@aol.com

#### TN CHESS NEWS EDITOR:

Leonard Dickerson  
 420 Oran Road  
 Knoxville, TN 37932  
 H: (865) 966-1095  
 e-mail: lsdict@tds.net

#### VICE-PRESIDENT:

Paul Semmes  
 1010 N. Maple Ave.  
 Cookeville, TN 38501  
 H: (931) 863- 4082  
 e-mail: PaulSemmes@charter.net

#### EAST TENNESSEE DIRECTOR:

Victor Suich  
 707 Pritchard  
 Morristown, TN 37813  
 (423) 586-4351  
 e-mail: vesuich@bellsouth.net

#### MIDDLE TENNESSEE DIRECTOR:

Roy Manners  
 1215 Cumberland Heights Road  
 Clarksville, TN 37040  
 H:(931) 552-1839  
 e-mail: clarksvillechessclub@charter.net

#### SECRETARY:

Chris Prosser  
 733 Long Hunter Court  
 Nashville, TN 37217  
 H: (615) 399 - 8432  
 e-mail: regioniii@aol.com

#### WEST TENNESSEE DIRECTOR:

Korey Kormick  
 3550 S. Galloway Rd.  
 Memphis, TN 38111  
 H: (502) - 396 - 8858  
 e-mail: kjkormick@hotmail.com

#### TREASURER:

Angela McElrath-Prosser  
 733 Long Hunter Court  
 Nashville, TN 37217  
 H: (615) 399 - 8432  
 e-mail: tcanews@aol.com

#### Regional Scholastic Coordinators

##### Region 1:

David Marsh  
 4411 Stillwood Road  
 Louisville, TN 37777  
 H: (865) 982-7216; NESGIV4DAVE@aol.com

##### Region 2:

Michael Ake  
 16 Pinecrest Dr.  
 Wildwood, GA 30757  
 Cell phone: (423) 505-8214  
 O: (423) 493-5406; revmake@bellsouth.net

##### Region 3:

Chris Prosser  
 733 Long Hunter Court  
 Nashville, TN 37217  
 H: (615) 399-8432; e-mail:  
 regioniii@aol.com

#### INTERNET CHESS COORDINATOR:

Alan Kantor  
 577 Livingston Road, Apt. 23  
 Crossville, TN 38555  
 H: (931) 200-9038  
 W: (931) 787-1234 ext. 128  
 e-mail: kantor@charter.net

#### SCHOLASTIC COORDINATOR:

Harry D. Sabine  
 P. O. Box 381  
 Crossville, TN 38557  
 H: (931) 484-4878  
 W: (931) 484-9593  
 e-mail: hdsabine@citlink.net

#### TOURNAMENT COORDINATOR:

Larry Grohn  
 7032 Igoo Gap Road  
 Chattanooga, TN 37421  
 H: (423)-243-8235  
 e-mail: LarryGrohn@comcast.net

##### Region 4:

Brian Vogt  
 2669 Sweet Maple Cove  
 Germantown, TN 38139  
 H: (901) 624-0020; b-vogt@comcast.net

TCN/Fall 2009\_34