



WINTER 2010

VOLUME 53

NO. 1

North Tenn. Winter Open .....	5
Tenn. Scholastic Individual Qualifiers .....	9
49 <sup>th</sup> Mid-South Open .....	11
Knoxville City Championship .....	12
Top Ten Individual Regional Qualifiers .....	16

---

---

- February 20, 2010      **1<sup>st</sup> Ever Heartbreaker Open**  
Nashville Chess Center, Nashville, TN  
615-292-7341 or E-mail: [info@nashvillechess.org](mailto:info@nashvillechess.org)
- March 6, 2010      **Tenn. Regional Team Qualifiers**  
Reg. 1: Oak Ridge High School, Oak Ridge  
Reg. 2: Univ. Ctr. of Univ. of Tenn. Chattanooga, Chattanooga  
Reg. 3: Morgan Univ. Center of Austin Peay, Clarksville  
Reg. 4: Holy Rosary Parish School, Memphis  
See TCA website for contacts: [www.tnchess.org](http://www.tnchess.org) or last page of TCN
- March 27, 2010      **State Team Finals**  
Roaden Univ. Center, Tenn. Technological Univ., Cookeville, TN
- March 27, 2010      **East Tenn. Scholastic Spring Open**  
Milligan College, Johnson City  
423-975-8031 or E-mail: [jcsimonsen@milligan.edu](mailto:jcsimonsen@milligan.edu)
- April 24, 2010      **2010 Tennessee Girls Chess Championship**  
Nashville Chess Center, 2911 Belmont Blvd., Nashville, TN.  
615-292-7341 or E-mail: [info@nashvillechess.org](mailto:info@nashvillechess.org)
- May 1, 2010      **Lakeway Spring Open**  
Lakeway Community Church, Morristown, TN  
Info: Victor Suich; Tel. 423-586-4351; E-mail [vesuich@bellsouth.net](mailto:vesuich@bellsouth.net)
- May 14, 2010      **2010 Tenn. Senior Open**

This magazine is being provided to current Tennessee Chess Association members as one of their benefits for supporting chess activity in Tennessee. It is the official publication of the *Tennessee Chess Association* and its legal property. We are trusting you to not abuse the privilege of access to this information. Abuse would be considered copying over two pages for publication without crediting the source (Tennessee Chess News—TCN). However, you are permitted to download a copy of this publication to your personal computer. If you desire to use this content for other purposes than your own copy, contact the editor, Leonard Dickerson, for approval. Thank you for your support of chess in Tennessee and observation of these few requests!

## MEMBERSHIPS

TCA annual dues are \$10 for a *regular* membership or *student* membership. Additional members of a family may join for one dollar each, but only one copy of printed **TCN**'s will be available per family. Both regular and patron memberships are for a 12-month period, starting in the month of purchase and expiring after a 12-month period.

**Tax deductible Patron Memberships** are available beginning at \$100 per year for those who wish to help support the TCA and the FFTC. These memberships expire one year from the date of payment. The Patron membership categories are:

**PATRON — \$100; PATRON KING — \$300; PATRON MASTER — \$500; PATRON GRANDMASTER — \$1000+**

The benefits that pertain to the different level of patronage are currently being refined and will be detailed on our website soon.

## TOURNAMENT ANNOUNCEMENTS

**TCN** prints listings of upcoming tournaments that require TCA membership in each issue for free. Submit complete TLA information to Larry Grohn, Tournament Coordinator: E-MAIL: [LarryGrohn@comcast.net](mailto:LarryGrohn@comcast.net)

## TCN CHESS NEWS STAFF

### Editor

Leonard Dickerson

### Contributors

Roy Manners

Malcolm Estrada

## TCN PUBLICATION SCHEDULE

**Spring 2010** — Scheduled for May 1st covering Feb, Mar, and Apr events

**Deadline for submission: Apr 18, 2010**

**Summer 2010** — Scheduled for Aug 1 covering May, Jun, and Jul events

**Deadline for submission: July 18, 2010**

**Fall 2010** — Scheduled for Nov 1 covering Aug, Sept, and Oct events

**Deadline for submission: Oct 18, 2010**



**Winter 2011** — Scheduled for Feb 1 covering Nov, Dec, and Jan events

**Deadline for submission: Jan 18, 2011**



Please submit material by e-mail to: [lsdick@tds.net](mailto:lsdick@tds.net)

# PATRON MEMBERS

**TENN. CHESS ASSOC. & FOUNDATION FOR TENN. CHESS**


Patron Grandmaster


**Dr. Martin Katahn**


Patron Member


**Malcolm Estrada**

**Peter Lahde**

**R. K. Shimabukuro**

**Brian Vogt**

# TN HALL OF FAME

The **Tennessee Chess Hall of Fame** was established to honor those members who have distinguished themselves through their outstanding achievements in chess, either in competition or in chess organization or promotion. Peter Lahde is chairman of the electing committee, and guidelines for nominations are posted onsite. Below is a listing of the current members and their year of induction.

Peter Lahde	1990	John Hurt	1992
Robert Coveyou	1990	James A. Sweets	1993
Jerry Sullivan	1990	Rea Hayes	1997
Martin Southern	1990	James A. Wright	1998
Tom Finucane	1990	Dr. Martin Katahn	2002
Robert Serivener	1990	David Burris	2003
L. Hunter Weeks	1990	Albert Hodges	2005

## FROM THE EDITOR

The two major tournaments of the winter have concluded: the North Tennessee Winter Open and the Tenn. Regional Individual Qualifying tournaments. A few games are available from the regional tournaments and a host of games are available from the NTWO.

In fact, thank you, players, for supplying me with an abundance of games from the NTWO! I really would appreciate receiving games from local tournaments, such as those G/60 events conducted by Harry Sabine, the Nashville Chess Center, Chattanooga Chess Club, or Memphis Chess Club. To get free advertising, organizers or tournament directors could simply ask that the top boards of their section submit at least one game. Moreover, the readership would surely enjoy having such games analyzed by the players themselves rather than simply commented by me. So please send me your commented games for publication (or just any record of your games) or impressions about a tournament. With the TCN now being published online, we can publish almost any size submission.

Note that we have a new West Tennessee Director. Marla Stafford replaced Korey Kormick in this capacity. We thank Korey for the work that he did representing West Tennessee and look forward to working with Marla as the new West Tenn. Director. Her address can be found on the listing of directors.

The big news of this quarter is that the revised Tennessee Chess Association website has gone public! We are officially online. The new look provides functionality that brings us into the computer age. We are now able to process tournament entries online and receive membership dues through the internet. Too, we have an online game viewer and downloadable games! So we provide a host of new services along with our modern appeal. Note particularly, though, that our URL is only [http://tnchess.org/.](http://tnchess.org/) For a long while I was making the mistake of trying to access the new site with the old URL. They are similar but certainly not the same.

Of course, the TCN is also online. Note that I am trying a full-page approach this time. Let me know your feelings about this format and whether you prefer the previous style. The games used in this issue can be found as both viewable and downloadable files (labeled as WinTCN.pgn) on our website. Many other games were submitted and analyzed. These, too, can be found on the TCA website (labeled Winter2010.pgn).

Let me also know your opinions about the new website, its functionality, features, and things that you might see as improvements. Keep in mind, though, the site is still undergoing transition and development.

## FROM THE PRESIDENT

The Tennessee Winter Open has come and gone. And for those of you who participated, members and friends, the TCA extends our appreciation. As a participant, I thought that all went pretty well for a first time at this venue. The accommodations at Henry Horton State Park were comfortable and clean, the staff very helpful and the room price with the winter discount was excellent. The restaurant food was good, also, though, somehow the Clark Range Gang managed to consume pizza almost non-stop. (Chapel Hill is right down the road.) Of course, it was the Winter Open and the temperatures were—as they were everywhere—brutal. So Chris Prosser got the fireplace working in the tournament hall, which I thought was pretty neat.

The Winter Open is going to settle in at Henry Horton State Park as we turn our attention to the State Championship. As I have stated before, this all important event needs sponsorship and that is our goal going forward. We will soon have more to report on the location of the championship this year and our efforts for 2011 venue.

## North TN Winter Open

The Tenn. Winter Open was held on Jan. 9-10th at Henry Horton State Park in Chapel Hill. It was a 10-pt Grand Prix tournament of five rounds played G/120 with a guaranteed prize fund of \$2,200. Sixty players attended the event which had six sections ranging from Pawns (U1000) to Kings (Open). (Unrated players were required to play in the Bishops Section.) Four of the sections were combined because of their size (the Kings and Queens and the Bishops and Knights) but this did not affect the prize distribution. Chris Prosser competently directed the quality tournament and even the inclement weather did not prevent it from being a success.

**Ronald Burnett** and **Todd Andrews** tied with 4.0 to dominate the **Kings and Queens (U2000) Section**.

Zaki Tanis, rated 1799, was the top finisher of the Queens Section with 3.0 points. The second and third place finishers of the Queens Section were Corry Marsh and Eleanor Barkley with 1.5 points.

**Ashraf Armanios** won the **Rooks (U1750) Section** with 4.5 points, giving up a draw only to second place finisher Ben Li who finished clear second with 4.0 points.

**Randall Vaughn**—a lower-rated Knight—picked up a whopping 131 points by winning the **Bishops (U1500) and Knights (U1250) Section** with a remarkable five points. Undefeated **Malcolm Estrada** and **Austin Lillis** tied with 4.0 points for second and third place honors, over all. Malcolm was the top finisher of the Bishops while 969-rated Austin Lillis was the second place finisher of the Knights Section. His high finish was reflected by the 167

point jump that his official rating experienced. Jordan Smith of Kentucky took second-place in the Bishops Section with 3.0 points, a score that four other players shared in this tough division.

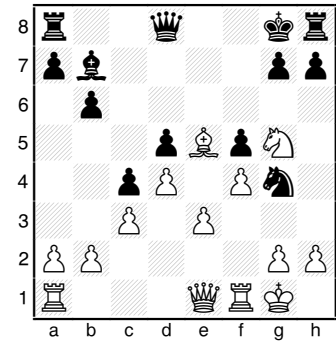
The **Pawns (U1000) Section** had 8 players and, hence, some really competitive games. But **Donnie Douglas** still managed to give up only one draw to dominate the section with 4.5 points. **Adrian Gellert** and **Rachel Weishaar** both had 3.5 points and shared 2<sup>nd</sup> and 3<sup>rd</sup>-place honors.

Below are two games from the champions of their respective sections: a battle between the first- and second-place finishing Bishops (U1500) and the co-winners of the Kings and Queens Section. All games submitted from the Open Section (Kings and Queens) are included in this issue. However, because so many games were submitted from the sections, all are not included in this issue but can be found in a viewable and downloadable format on our website. And—thanks to Roy Manners—we have some photos from the event!

**NTWO - Bishops**  
**Malcolm Estrada - 1466**  
**Jordan Smith - 1277**  
**Result 1-0**

1. Nf3 d5 2. d4 e6 3. Bg5 Be7 4. Bf4 Nd7 5. Nbd2 Ngf6 6. e3 c6 7. c3 b6 8. Bd3 Bb7 9. O-O c5 10. Ne5 c4 Black effectively seals his own bishop out of the game while killing his tension on the center. Too, it is seldom that this move produces enough queenside counterplay to match White's quicker kingside play and action in the center. 11. Bc2 Bd6?? Malcolm properly awarded this move the "??". 12. Nxf7 Kxf7 13. Bxd6 Nf8 14. Be5 Ng6 15. f4 Ne7 Redeploying to attack the backward pawn on e3. 16.

Nf3 Nf5 17. Bxf5 exf5 18. Ng5+ Kg8 19. Qe1 Better is Bxf6 followed by a battle between a knight and bad bishop. Ng4?



20. Bxg7 Malcolm alertly pounced on this game-winning tactic based on a knight fork. Qe7 21. Bxh8 Kxh8 22. Rf3 A little better is Qh4 followed by Rad8. h6 23. Rh3 Better was h3, but the issue is not really in doubt. Kg7 24. Nf3 Qxe3+ 25. Qxe3 Nxe3 26. Rg3+?! (26. Re1! Re8 27. Nd2) 26... Kf6 27. Ne5 Ng4 28. h3 Nxe5 29. fxe5+ Kf7 30. Rf1 Bc8 31. Rf4 Be6 32. Kh2 Rh8 33. Rgf3 Kg6 34. g4 Rf8 35. gxf5+ Rxf5 36. Rxf5 Bxf5 37. Kg3 Kg5 38. h4+ Kg6 39. Kf4 Be6 40. Kg3 Bf5 41. Re3 Be4?! 42. Kf4 Kf7 43. Rxe4 dxe4 44. Kxe4 1-0

**NTWO - Open (4)**  
**Ronald Burnett - 2403**  
**Todd Andrews - 2343**

1. d4 Nf6 2. Nf3 d5 3. c4 dxc4 4. e3 e6 5. Bxc4 c5 6. dxc5 Qxd1+ 7. Kxd1 Bxc5 8. Ke2 Nc6 9. a3 Nd7 10. b4 Be7 11. Bb2 Bf6 12. Bxf6 gxf6 Nxf6 just leaves Black's pieces cramped for awhile. Now e5 is controlled and there is the potential of reducing the pieces even more, approaching a draw. 13. Nbd2 Rg8 14. g3 Nde5 15. Rac1 Bd7 16. b5 If White had to win, Bb3 would be the move of choice. Na5 17. Nxe5 fxe5 18. Bd3 f5 White could continue with e4 if he was intent on winning, but a draw of respect was agreed. 1/2-1/2



Round 2 Action. In the foreground we see Isabel Gellert (her lovely hair, anyway) facing off with Steve Boggs. Their table mates are TCA President Malcolm Estrada and the emerging talent, Alexander Qin. Note the weather-conscious anxious in the background looking out the window.

More Round Two action. Peter Suich (striped shirt) takes on Zaki Tanas, and young Margaret Hua faces Arnold Justin. In the background, Corry Marsh prepares to move against Ali Alataiwi (standing). The cause of concern glistens outside the window.



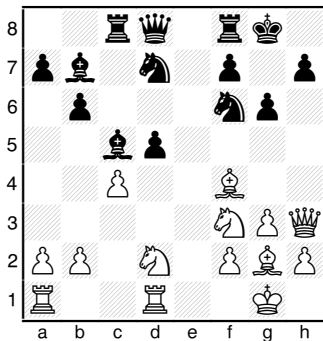
Round 3 Action. Larry Grohn plays Black against Steve Boggs and Luke Weishar challenges Jing Bms Dai. The tournament had an interesting mix of girls and guys and the young and old.

**NTWO - Open**

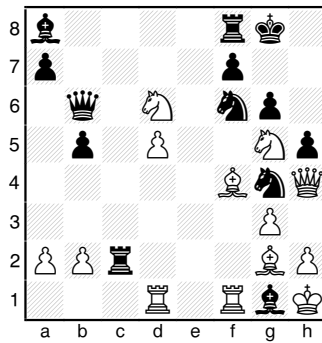
**Matthew Marsh - 2132**

**Justin Arnold - 1946**

1. d4 Nf6 2. c4 e6 3. Nf3 d5  
 4. g3 Bb4+ 5. Bd2 Be7 This hyper-refinement might give Black some extra but I don't quite see its worth unless it is to discourage the fianchetto of White's black-squared bishop or decrease White's protection of d4; otherwise, there is no tempo gain. 6. Bg2 O-O  
 7. Qc2 c6 8. O-O Nbd7 9. Bf4 Well, this is a lousy square for the bishop. So maybe Black's refinement worked? b6 10. Nbd2 Bb7 11. Rfd1 Rc8 12. e4 c5 (Also playable is Nh5: 12... Nh5 13. Be3 f5 14. exf5 exf5 15. Nb3 f4) 13. exd5 exd5 14. dxc5 Bxc5= 15. Qf5 g6 16. Qh3

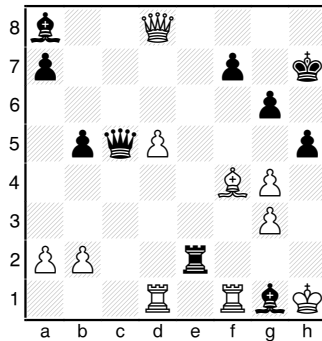


b5!? 17. cxd5 ( Fritz11 suggests: 17. b4 Bxb4 18. Rab1 Qa5 19. Ng5 bxc4 20. Rxb4 Qxb4 21. Rb1 Qxb1+ 22. Nxb1 c3 23. Nxc3 Rxc3) 17... Qb6 18. Ng5 Rf1 seems more prudent. White threatens Nxh7 when the knight on d7 can become loose. Bxf2+ 19. Kh1 h5 20. Nde4 Rc2 21. Nd6 Better was Rac. Ng4! 22. Rf1 Fritz11 suggest Bf3. Ndf6 23. Rad1 Better was Nxb7, reducing attackers and freeing up the White pieces for counter play. Ba8-+ 24. Qh4 Ndx7 can be played to get the passed pawn moving. Bg1 (See Diagram, next column) 25. Nge4 Nxe4 26. Nxe4 Re8 27. h3 Rxe4 28. hxg4 Rxc2! 29. Kxc2 (29. Be3 Rxe3 30. Kxc2 Re2+ 31. Kh1 Bd4) 29... Re2+ 30. Kh1 Qc5?? Black took 2 minutes to make this move, so it is



After 24.... Bg1!?

probable that he saw Rh2+ winning the queen but not the game. Stronger is Bd4. Both are short on time: White has 9 min. and Black has 5 min. remaining. 31. Qd8+ Kh7



32. Rd2? (32. Be3!! This nice line clearing interference sac would win for White: Rh2+ 33. Kxg1 Qxe3+ 34. Kxh2) 32... Rxd2 33. Be3 Bxd5+ 34. Kxg1 Qxe3+ 0-1

**NTWO - Open (4)**

**Tanas Zaki - 1799**

**Alataiwi Ali - 1821**

1. d4 d5 2. c4 c6 3. Nc3 Nf6  
 4. Nf3 e6 5. Bg5 Be7 6. e3 Ne4 A stonewall defense seems to be the only option available to Black after this move. 7. Bxe7 Qxe7 8. Bd3 f5 9. Ne5 O-O 10. O-O Nd7 11. f4 Ndf6 Better seems to be a trade of both knights rather than leaving the White knight dominant on e5. Now White should swap his bishop for the knight on e4 and try for a good knight versus bad bishop position. 12. Rc1 Bd7 13. cxd5 exd5

14. Qb3 Be8 (14... Nd2 15. Qxb7 Nxf1 16. Rxf1 a5 17. Na4 Rfb8 =) 15. Na4? Nd2 16. Qc2 Nxf1 17. Rxf1 Ne4-/+ 18. b3 Rf6 Better was Rc8. 19. g4 fxg4 Better was Bd7. 20. Bxe4 dxe4 21. Qxe4 Black still has an advantage but White's eternal knight on e5 provides much compensation. Rh6 (21... Bg6 22. Qg2 (22. f5 Raf8 23. Qg2 Bxf5) 22... h5 23. h3 gxh3 24. Qxh3 Raf8-/+ 22. Nc5 Qh4 23. Qg2 b6 Better was Bf7, hindering the knight transferring to the kingside and planning Bd5. 24. Ne4 Bf7 25. Ng3 Rf6 Necessary was Qh3. 26. Ne4 (26. Nxc6 Re8 27. Ne5+/=) 26... Rh6 27. Ng5 Bd5 28. e4 Be6 29. d5 cxd5 30. exd5 Bc8 The notation ends here with White claiming an advantage. 1-0

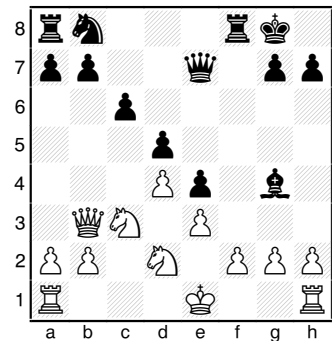
**NTWO - Kings & Queens (2)**

**Corry Marsh - 1706**

**Alataiwi Ali - 1821**

1-0

1. d4 d5 2. c4 c6 3. Nc3 Nf6  
 4. Nf3 e6 5. Bg5 Be7 6. e3 Ne4 7. Bxe7 Qxe7 8. Nd2 f5 9. cxd5 (9. Ndx4 fxe4 10. Qh5+ g6 11. Qh6 gives White some advantage but leaves him potentially vulnerable on f2.) 9... exd5 10. Bd3 O-O 11. Bxe4 fxe4 12. Qb3 Nd7 would have seen Black maintaining a small edge. Bg4



13. Nxd5?! (13. Ndx4 Qf7 14. f3 Bc8 15. Nc5+/-) 13... cxd5 14. Qxd5+ Kh8 (14... Be6 15. Qxe4 Qf7 16. O-O Nc6) 15. Qxe4 Qd7 Black

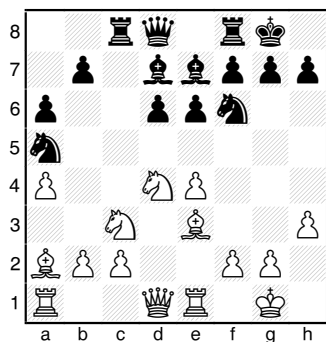
needs to make his gains before a true endgame ensues. 16. O-O Nc6 17. f3 Bf5 18. Qh4 Rae8 19. Qf2 Bd3 (19...Nb4 20. Nc4 (20. e4? Bxe4) 20... Nd3 21. Qd2) 20. Rfe1 b6 21. Nf1 Bc4 Better was a5. 22. Ng3 Nb4 23. b3 Bd5 24. Qd2 Nc6 25. e4 Bf7 26. d5 Ne5 27. Rac1 Bg8 28. Nf5 g6 29. Nd4 Rc8 30. Rxc8 Rxc8 31. Rc1 Kg7 32. Rxc8 Qxc8 33. Qb2 Kf6? Black cannot allow this pin. Kf8 would allow him to retain chances. 34. Nc6 Qc7 35. f4 g5 36. Qxe5+ Qxe5 37. fxe5+ 1-0

#### NTWO - Open (4)

Ali Alataiwi - 1821

Will Stevenson - 2138

1. e4 c5 2. Nf3 d6 3. Nc3 Nf6 4. d4 cxd4 5. Nxd4 a6 6. a4 Nc6 7. Bc4 e6 8. O-O Be7 9. h3 O-O 10. Be3 Bd7 11. Re1 Rc8 12. Bb3 Nxc6 or Qd2 is suggested. Na5 13. Ba2



Rxc3 14. bxc3 Nxe4+/- Fritz11 gives Black a 0.4 advantage. 15. Qd3 Nc5 16. Qe2 Nxa4 17. Bd2 Fritz suggests Qd3, but hardly anyone trying to win is going to continue to let Black move about with tempo. Bf6 18. Bb3 Nc5 19. Qe3 White has nothing better than the miserable Ba2. e5 20. Ne2 (Fritz suggests the sacrificial Bd5, but White still can't hold the balance: 20. Bd5 exd4 21. cxd4 Na4 22. Qf4 b5 23. Qxd6 Bc6) 20... Naxb3 21. cxb3 Nxb3 22. Rab1 Nxd2 23. Qxd2 Bc6-/+ Black's energetic play has produced a textbook example of the effectiveness

of the exchange sacrifice. And now the bishops will show why they can sometimes prove equal to the rooks on an open board. 24. Ng3 Bg5 25. Qd3 g6 26. Ne4 Be7 27. c4 Qa5 28. Ra1 Qc7 29. Nc3 Rc8 30. Nd5 Qd8 31. Rad1 Bg5 32. Nb4 Ba4 33. Ra1 Be8 34. Nd5 Rc5 I'm not positive that this was the 34th move because the score sheet was marred. However, the remainder of the game matches the score. 35. Red1 Bd7 36. Nb4 Be6 37. Qxd6 Qxd6 38. Rxd6 Rxc4 39. Rb6 Bd2 40. Nd3 Rc7 41. Rab1 Bf5 42. R1b3 Kg7 43. Rd6 e4 44. g4 (44. Nc5 Rxc5 {44... Bf4 45. Rd5} 45. Rxd2 b5 46. g4) 44... Be6 45. Rxe6 fxe6 46. Nb2 b5 47. Kf1 Rc3 48. Rxc3 Bxc3 49. Nd1 Bd4 50. Ke2 b4 51. f3 0-1

#### NTWO - Open (2)

Todd Andrews - 2343

Donny Gray - 2115

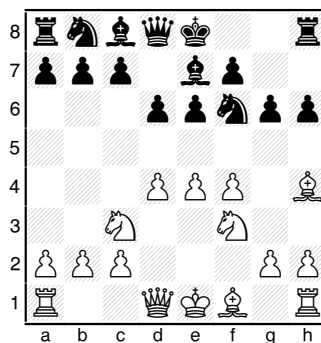
1. d4 c6 2. c4 d5 3. Nf3 Nf6 4. e3 e6 5. Nc3 Be7 6. Bd3 dxc4 7. Bxc4 b5 8. Bd3 a6 9. Qe2 Bb7 10. O-O Nbd7 11. e4 h6 More promising seems to be c5. 12. Rd1 Qc7 13. e5 Nd5 14. Nxd5 cxd5+/- Black's white-squared bishop is entombed. 15. Bd2 O-O 16. h4 Rfc8 17. h5 Nf8 18. Nh2 f6? This creates significant white-square weaknesses. Nh7 was better, planning Ng5 or Bg5 19. exf6 Bxf6 20. Qg4 Kh8 21. Nf3 Qf7 22. Re1 Rc6 23. Bf4 Rac8 24. Re2 Rb6 25. Rael Rcc6 26. Re3! Planning to use the rook along the third rank. Bc8 If Nd7, Qg3. 27. Ne5 Bxe5 28. Bxe5 Rb7 29. Rf3 Qe7? 30. Qxg7+ and Rxf8 is mate. 1-0

#### NTWO - Open (5)

David Justice

Ronald Burnett

1. e4 g6 2. d4 d6 3. Nc3 Nf6 4. Bg5 h6 5. Bh4 Better is Bxf6, in the spirit of a Trompovsky. e6 6. f4 Be7 7. Nf3



Nxe4!? Radical and perhaps unsound. 8. Bxe7 Nxc3 9. Bxd8 Nxd1 10. Bf6 Ne3 11. Ke2 Nxc2 12. Rc1 Rg8 Best is probably castles, but Ron wants to use his king as a fighting piece to compensate for his material deficit. And bad, of course, is Nxd4+ because of White will be able to subsequently snap off the c-pawn. 13. Rxc2 Nd7 14. Bh4 c6 15. Kd1 Kf2 looks a little better, using the king to shore up the kingside and allowing the rooks full sway on the queenside. f6 16. Bc4 Kf7 17. Re1 d5 Slightly better is Nb6, but Black is not interested in swapping any pieces. 18. Bd3 g5 19. fxg5 hxg5 20. Bg3 Ke7 Denying the bishop the a3-f8 diagonal. 21. Nd2 a5 22. Bf5 Nf8 23. a4 Ra6 24. Bd3 Rb6 25. b3 Rb4 26. Bf2 The more active Rc5 would relieve the piece cramp but would give up the d-pawn which serves to restrain the central pawn storm: 26. Rc5 Rxd4 27. Kc2 e5 28. Rxa5 Ne6 29. Bf2 Rxd3 (29... Rf4 30. Bb6 Rh4 31. Rh1 Rgh8 32. h3 Nf4 33. Bf1 Bf5+ and Black is making sure progress) 30. Kxd3 Nf4+ 31. Kc3 Nxc2 32. Rd1 Fritz says that Black is only a 1-point minus, and it is obvious that the mass of pawns will cost White at least a piece. 26... Bd7 27. Rc5 b6 28. Rc3 Kd6 29. Bc2 Be8 30. Bf5 Bh5+ After 31. g4 Black can even afford to swap bishops with Bg6. Though White still has a plus, he has to be uncomfortable facing the advancing pawns. 1/2-1/2

## Tenn. Regional Individual Qualifiers

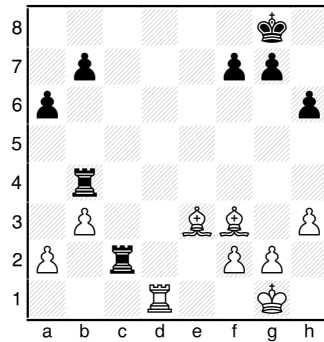
The Regional Qualifying tournaments for Tenn. scholastic players took place on January 23, 2010. The unrated 5-round events with mixed time controls of G/30 (Rounds 1 & 2) and G60 (Rounds 3-5) were held in the four regions of the state to qualify eight candidates per grade range and region for participation in the February 13<sup>th</sup> Individual Finals. Some very large sections (generally the Elementary) were expanded to 6 rounds with the latter rounds being conducted at G45. Consequently, some of the events lasted a complete 12 hours from registration through awards!

The top ten finishers in each section are shown on pages 16 and 17. These will not necessarily be the eight regional finalists that actually participate in the Finals, but they certainly will give you an idea of whom the candidates are. You can find the complete and updated listing on the Tenn. Chess Association's website (tnchess.org).

Most of the last round games of the Regionals were hotly contested. But because of the fast time limit and reluctance of many scholastic players to keep score, few score sheets are available for publication. But Region 1 did provide a thriller that was captured!

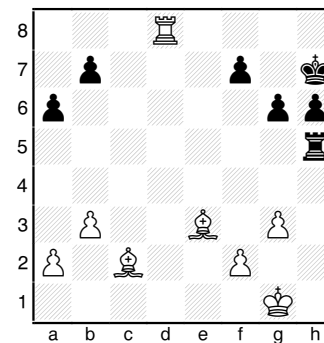
The competitive Jr. High Section of the Region 1 Individual Qualifier ended in a three-way tie with Corry Marsh, Andrew Simonsen, and Sanchit Wadhawan. Playoff games of Game/10 with 5 sec. delays were required to determine the champion. Following is the essence of the position with which Sanchit (playing

White) averted the body of onlookers. Black just played Rc2 ....



Position from Jr. High Playoff Game. White (Sanchit) to move.

Sanchit impressed the audience with 1. Rd8+ Kh7 2. a3! Rh4 3. g3 Rxf3 4. Be4+ g6 5. Bxc2 Rh5 (forced)



Position from Jr. High Playoff Game. White (Sanchit) to move.

6. Bd4! Mate is unavoidable.

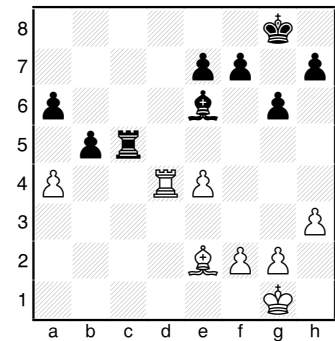
Those were applaudable moves to find with the clock ticking down. Then he again proved his worthiness to be dubbed number one in his next playoff game, below.

**Reg. 1 Qualifier TieBreaker**  
Corry Marsh - 1701  
Sanchit Wadhawan - 1543

Just as in the first game when he defeated Simonsen, Sanchit made a couple of excellent moves - especially considering that the game was conducted at a quick pace.

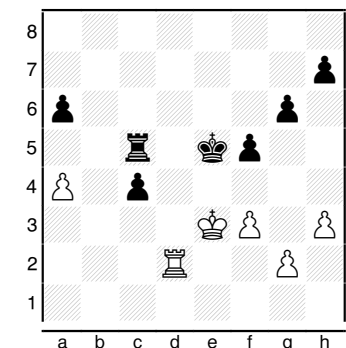
1. d4 Nf6 2. c4 g6 3. Nc3 d5 4. cxd5 Nxd5 5. e4 Nxc3 6. bxc3 Bg7 7. Nf3 c5 8. Be3

Nc6 9. Be2 O-O 10. O-O a6 They blitzed the first 10 moves off using only 30 seconds each. This move was the first to give Corry pause. 11. Rb1 (11. d5 Ne5 12. Bxc5 Nxf3+ 13. Bxf3 Bxc3 14. Rc1 Bb2 15. Rc2 Be5 16. Bd4+/-) 11... b5 12. dxc5 After the game, Sanchit told Corry that this exchange is generally weak in the Grunfeld. Indeed d5 is good and a4 might even be feasible. 12... Bxc3 13. Qxd8 Rxd8 14. Rfd1 Rxd1+ 15. Rxd1 Be6 16. Nd4 Of course a3 is better, but there is not enough time for prolonged thought. 17. Bxd4 Bxd4 18. Rxd4 Rc8 19. h3 The immediate a4 is necessary. Rxc5 20. a4



Marsh - Wadhawan Playoff. Black to make 20<sup>th</sup> move.

**Bc4** This idea is best implemented with Rc1+ for now White has Bf1. 21. Bxc4 bxc4 22. Rd8+ Kg7 23. Rd2 e6 24. Kf1 f5 25. exf5 exf5 26. f3 White shouldn't further weaken his pawns. Rushing with his king is required. Kf6 27. Ke2 Ke5 28. Ke3



Marsh - Wadhawan Playoff. Black to make 28<sup>th</sup> move.

Rd5 (28... f4+! 29. Ke2 c3 30. Rc2 Kd4) 29. Rc2?! (29. f4+ Kd6 30. Rb2 Rd3+ 31. Ke2 Rb3 32. Rd2+ Kc5) 29... Rd3+ 30. Ke2 Kd4 31. Rd2 (More resistance was offered by Rb2 but it still looks bad for White: 31. Rb2 Ra3 32. Rd2+ Kc3 33. Rd7 Rxa4) 31... Rxd2+ 32. Kxd2 c3+ 33. Kc2 Kc4 34. g4 fxc4 35. hxg4 g5 36. a5 Kb4 37. Kd3 Kb3 38. Ke4 c2 39. Kf5 c1=Q 40. Kf6 Qf4+ 41. Kg7 Qe5+ 42. Kxh7 Qf6 43. Kg8 Qe7 44. Kh8 Kc4 45. f4 gxf4 46. g5 Qxg5 47. h7 Kd5 48. Kh8 Ke6 49. Kh7 Kf7 50. Kh8 Qh6# 0-1

Following are a couple more games of the Jr. High Champion of Region 1 played against two of his usual competitors.

#### Region 1 Individual (5)

Victoria Suich  
Sanchit Wadhawan

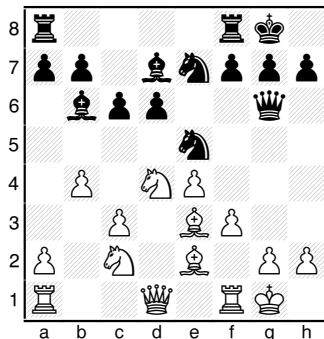
1. e4 c5 2. Nf3 Nc6 3. Bc4 e6 4. d3 d5 5. exd5 exd5 6. Bb3 Nf6 7. Bg5 Be7 8. Bxf6 Bxf6 9. Nc3 Be6 10. Qe2 O-O 11. Rb1 Re8 12. O-O Bg4 13. Qd1 d4 (13... Bxc3! 14. bxc3 Ne5 15. Re1 b5 16. a3 c4 17. dxc4 Bxf3 18. gxf3 dxc4 19. Ba2 Qg5+) 14. Nd5 (14. Ne4 Ne5 15. Nxe5!? Bxd1 16. Nxf7 Qc7 17. Nfd6+ Kf8 18. Nxe8 Rxe8 19. Rbxdl-/+ ) 14... Ne5 15. Re1? (15. Nxf6+ gxf6 16. a4 Re7 17. Kh1 Qd6+) 15... Nxf3+ 16. gxf3 Rxe1+ 17. Qxe1 Bxf3 18. c4 dxc3 19. Nxf6+ Qxf6 20. Qe3 Qg6+ 21. Kf1 Qg2+ 22. Ke1 Qg1# 0-1

#### Region 1 Individual (4)

Sanchit Wadhawan  
Kai Smith

1. e4 e5 2. Nf3 Nc6 3. d4 exd4 4. Nxd4 Bc5 5. Be3 Qf6 6. c3 Nge7 7. Bc4 O-O 8. O-O d6 9. b4 (9. Nxc6 Nxc6 10. Bxc5 dxc5 11. Na3 =) 9... Bb6 10. Na3 Qg6 11. f3 (Better is Re1: 11. Re1 Qxe4? 12. Bg5) 11... Bd7

(11... a5 12. b5 Ne5 13. Qe2 Bc5 14. Ndc2 =) 12. Nac2 Ne5 13. Be2 c6 The immediate d5 is possible: 13... d5 14. f4 Ng4 15. f5 Nxe3 16. fxc6 Nxd1 17. gxf7+ Rxf7 18. Raxdl Rxf1+ 19. Rxf1 dxe4 20. Bc4+ Kh8 21. Rf7 Re8=/+ when the two bishops and a passed pawn give Black a small advantage.

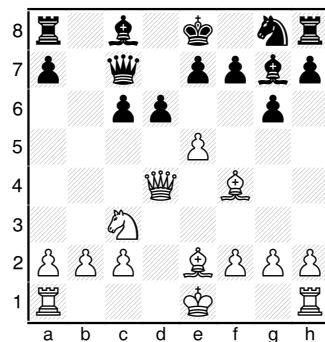


14. Qd2 (Forcing but likely leading to a Black edge is: 14. f4 Ng4 15. f5 Nxe3 16. fxc6 Nxd1 17. gxf7+ Rxf7 18. Rxf7 Kxf7 19. Rxd1) 14... d5 15. f4! Nc4 16. Bxc4 dxc4 17. f5 Qh5 18. Na3 f6 19. Nxc4 Bc7 20. Bf4 Bxf4 21. Qxf4 Rad8 22. Rad1 22. Qc7! wins more material and ties Black up. 22... b5 23. Nd6 Nc8 24. Nxc8 (A little stronger is Nb7: 24. Nb7 Rde8 25. Nc5 Re7) 24... Rxc8 25. Qf3 Qf7 26. Rf2 Stronger is Nb3 to stall c5. Qc4 Better was c5, creating some open lines for counterplay. 27. Qd3 Qf7 28. Rfd2 g6 29. Nf3 Better was Qg3, targeting the g3-d6 diagonal. Be8 30. Qd6 Qg7 31. Qg3 Qb7 32. Kf1 Bf7 33. Rd7 Qb6 34. Qf2 Bxa2? I guess he thought the queen was somehow pinned. 35. Qxa2+ Kh8 36. Qxa7 Qxa7 37. Rxa7 Rcd8 38. Rxd8 Rxd8 39. Rc7 Rd6 40. Nd4 gxf5 41. Nxf5 Re6 42. Rc8+ Re8 43. Rxe8# 1-0

#### NTWO - Knights (4)

Elijah Sandoval - 809  
Luke Weishaar - 1051

1. e4 c5 2. Nf3 Nc6 3. Nc3 Nf6 4. d4 cxd4 5. Nxd4 g6 6. Be2 Bg7 7. Nxc6 bxc6 8. e5 Ng8 The game continuation is adequate but you should recognize that the knight can go to d5, transposing into a position from the Accelerated Dragon: (8... Nd5 9. Nxd5 cxd5 10. Qxd5 Rb8) 9. Bf4 Qc7 10. Qd4 d6 (10... Qb6 11. Qd2 Qxb2 12. Rb1 Qa3 13. O-O and White's activity easily compensates for the pawn deficit. For instance, 13... Qa5 walks into Nb5.)



11. Bc4? (11. exd6! Bxd4 12. dxc7 e5 13. Bg3 Ne7 14. O-O-O and Black is going to have problems with that c-pawn. ) 11... dxe5 12. Nd5!? cxd5 Also effective is Qd6 followed by Bb7. 13. Qxd5 e6 14. Bb5+ Kf8 15. Qxa8 exf4 16. O-O Qb7-+ 17. Bc6 (17. Qxb7 Bxb7 18. Rad1 Nf6 19. Rd8+ Ke7) 17... Qxa8 18. Bxa8 Ke7 19. c3 Nf6 20. Bf3 g5 21. h3 h5 22. g4 hxg4 23. hxg4 e5 24. Rfel Nxg4 25. Bxg4 Bxg4 26. Kg2 Rd8 27. Rac1 Far too slow. Re4 with the idea of Ra4 might give White a modest hope. Rd2 28. b4 Rxa2 29. c4?! Ra1 had to be played. Now White is hopeless. Kd6 30. c5+ Kc6 31. Re4 a6 32. Rec4 Be6 33. R4c2 Rxc2 34. Rxc2 Bg4 35. f3 Be6 36. Rd2 Bd5 37. Kf2 f5 38. Rd1 e4 39. fxe4 fxe4 40. Ke2 Bc3 41. Rg1 Bxb4 42. Rxg5 Bxc5 43. Rf5 Bd6 44. Kf2 a5 45. Rh5 a4 46. Rh8 Kb6 47. Ra8 Bxa8 White mated on move 52 1-0.

## 49<sup>th</sup> Mid-South Open

Twenty-two players participated in this G/60, one-day tournament held on November 28 in Memphis.

**Kenneth Turner** took clear first with 3.5 points, and four other players tied for second place with 3.0 points. Among these was 1600-rated Patrick Coleman who further distinguished himself by winning the Under 1600 Section award. In the competitive **Under 1200 Section**, **Michael Collins** topped the field with a perfect 4.0. The strength of this five-player section was illustrated by all players scoring two points or better!

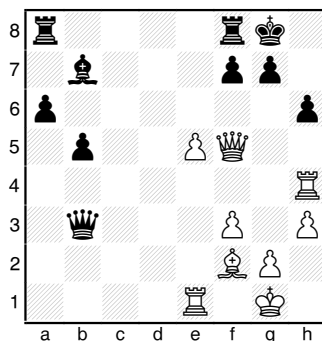
Games from the event can be found at [memphischessclub.homestead.com/games.html](http://memphischessclub.homestead.com/games.html).

### 49<sup>th</sup> Mid-South Open -4 November 28, 2009

**Graham Horobetz - 2006**  
**Kenneth Turner -1907**  
Result "0-1"

1. e4 e5 2. Nf3 Nc6 3. d4 exd4 4. Bc4 Be7 5. c3 Na5 6. Qxd4 There is no need to give the bishop up, so Bd3 is better. This would leave the knight doing nothing on a5. But perhaps White was hoping that Black would over-react and play 6... Bf6 when Bxf7+ could follow? Nxc4 7. Qxc4 d6 Better is the immediate 7... Nf6. If then 8. e5 d5 9. Qe2 Ne4. 8. Be3 Nf6 9. Nbd2 O-O 10. h3 Unnecessarily guarding against Ng4 but lingering in the center another move. a6 Better was the forcing d5. 11. O-O b5 12. Qd3 Bb7 13. Nd4 d5 14. e5 Ne4 15. f3 Ng3 16. Rfe1 \$11 c5 17. Nf5 Nxf5 18. Qxf5 d4 19. cxd4 cxd4 20. Bf2 Bb4 21. Rad1 Wrong rook for the pin remains, but still okay. Qa5 22. a3?? (Qf4 or Qd3 was okay.) Bxd2 23. b4 Qxa3 24. Rxd2 Qxb4 25. Rxd4 Qb3 26. Rh4 Rg4 threatens an immediate

draw with Rxcg+ h6



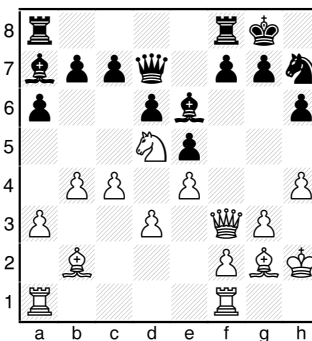
27. f4?! (27. e6 fxe6 28. Qg4 Rad8 29. Rxc6 Rd1 30. Rxd1 Qxd1+ 31. Kh2 Qd7 32. Qg6 Be4 33. Qxe6+ =) 27... Qd5 28. Rg4? Bc8 29. Rxc6+ Kxc7 30. Qf6+ Kh7 31. f5 Bb7 32. Kf1 Qxc6+ 33. Ke2 Qf3+ 34. Kf1 Qxh3+ 35. Ke2 Qf3+ 36. Kf1 Qg4 37. Re3 Rad8 38. Rg3 Rd1+ 39. Be1 Qxc3 0-1

49<sup>th</sup> Mid-South Open -3  
November 28, 2009  
David McPherson - 1712  
James Councill -1452  
Result "1-0"

1. e4 e5 2. Nf3 Nc6 3. Bb5 d6 4. c3 Bd7 5. d4 Nf6 6. Nbd2 a6 7. Ba4 Ne7? 8. Bb3 Securing a safe pawn was dxe5. exd4 9. cxd4 Bg4 Better was Nc6 to control e5 and continue development, but Black probably feared Ng5. (9... Nc6 10. Ng5 d5 11. O-O h6) 10. O-O g6?! Black is too slow developing. Again, Nc6 was required. 11. h3 Bxf3 12. Qxf3 Bg7 13. e5 dxe5 14. dxe5 Nd7?? 15. Qxf7# 1-0

49<sup>th</sup> Mid-South Open -2  
November 28, 2009  
Chase Knowles - 1651  
Charles Herbers -1997  
Result "1-0"

1. c4 e5 2. Nc3 Nf6 3. g3 Bc5 4. Bg2 d6 5. Nf3 Nc6 6. O-O a6 7. a3 O-O 8. b4 Ba7 9. Bb2 Bg4 10. h3 Be6 11. d3 h6 12. e4 Qd7 13. Kh2 Nd4 14. Nd5 Nxf3+ 15. Qxf3 Nh7 16. h4??



f5? The queen was dead after 16... Bg4, though 17. Bh3 could delay the execution. 17. Bh3 c6? Necessary was Rae8 to avoid knight forks on c7 and enable fxe. 18. exf5 cxd5 (18... Bxf5? 19. Bxf5 Rxf5 20. Qxf5 Qxf5 21. Ne7+) 19. fxe6 Rxf3 20. exd7 dxc4 21. dxc4 Nf6 22. Rad1 Ne4 23. Bxe5 Better than this was the simple c5, which shuts out the bishop. Raf8 24. Bxd6 Rxf2+ 25. Rxf2 Rxf2+ 26. Bg2 Bb6 27. Bc5 Nxc5 28. d8=Q+ Bxd8 29. Rxd8+ 1-0

## 2010 Nashville Chess Champions

This 6-player round robin held on January 16-17 consisted of seeded players who had proved their worth throughout the year. **Ronald Burnett** again topped them all with 4.5 points, going undefeated. Todd Andrews again came in second place even though he drew his game with Ronald this year. But his second-round encounter with 2043-rated Gainer Phay saw him drop the point, fixing him with 3.5 total points. Gainer Phay must excel at this events because last year he nipped Ronald for a draw, too!

Sorry, no games submitted.

## Knoxville City Championship

In the words of the President of the Knoxville Chess Club, John Anthony: "Bob Hydzik scored a double play. He won the Amateur Championship (open to players rated Under 2000) and tied for first in the City Championship (a closed round-robin) with FM Peter Bereolos." This epic achievement almost ended Pete's reign—which extends from 1996! But Sanchit Wadhawan beat Bob in the final round to give Bob and Pete both 4-points and a share of the title. In fairness to Pete, I must mention that the game was conducted with a 60-min time control rather than the 2-hr time control under which previous championships were usually conducted.

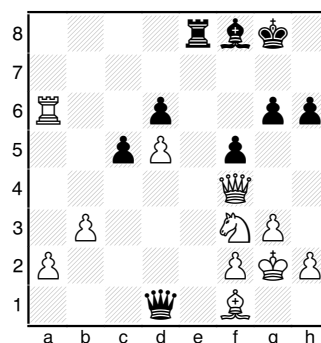
This decreased time control is a factor of the chess club's playing site (Unitarian Universalist Church off Kingston Pike) closing earlier. There has been a plus side to starting at 5:00 p.m. instead of 7:00 p.m., though. Now more younger players attend the club. However, those who work sometimes find it challenging to zip through the traffic. Hence they have to settle for a faster time control.

But, as we know, Bob also had to play at the faster pace, too! And he did see a fine move that was worthy of a champion. Observe his 28<sup>th</sup> move in the following game. Also presented is a tense game from Mueller. Crosstables, these games and all of the others from the championship can be found at the Knoxville Chess Club's website: <http://www.knoxvillechess.org/>.

**Knoxville City Ch. - 4**  
**November 12, 2009**  
**Robert Hydzik - 1566**  
**Peter Bereolos - 2318**

When white played this game, he was playing in both the Knoxville Amateur Championship and the Knoxville City Championship simultaneously; he was playing two Rated games at the same time. He won this game and drew the other one. [Comment of Pres. John Anthony]

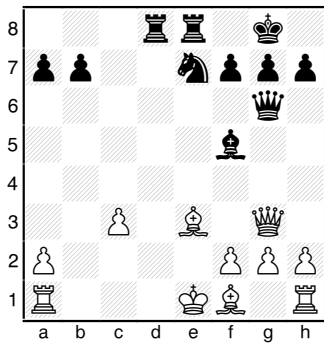
1. c4 g6 2. g3 Bg7 3. Bg2 Nf6 4. Nc3 O-O 5. Nf3 d6 6. O-O e5 7. d4 Nbd7 8. e4 exd4 9. Nxd4 a6 10. Re1 Re8 11. Bf4 Rb8 12. Rc1 Ne5 13. b3 c5 14. Nf3 Bg4 15. Bxe5 (Actually, 15. h3 is possible here since the black-squared bishop of White hits d6: 15. h3 Nxf3+ 16. Bxf3 Bxh3? 17. Bxd6 Ra8 18. e5 Nd7 19. Bxb7 Ra7 20. Bc6) 15... Rxe5 Bereolos assumes the onus of the higher-ranked player and avoids the drawish dxe. 16. Nd5 Nxd5 17. exd5 Rxe1+ 18. Qxe1 Qd7 Black has a small advantage mainly because of the two bishops. 19. Qd2 b5 20. Qf4 bxc4 Best is Re8: 20... Re8 21. Re1 Rxe1+ 22. Nxe1. Black has a certain advantage regardless of the reduced pieces. He can play Bf5 with the idea of b4, creating a target at the base of the pawn chain; or he could followup with perhaps Qe7 to penetrate into White's position. Regardless of the continuation, it is obvious that Black is on defense. 21. Rxc4 Not 21. bxc because Black of 21... Rb2, taking the 7th rank with tempo. After Rxc, White has enough counter play to be roughly equal, mainly because of Black's weak a-pawn. Re8?? 22. Qxg4 "White offered a draw here," comments John Anthony. Qe7 23. Qf4 h6 24. Ra4 f5 25. Rxa6 Qe2 26. Bf1 Qd1 27. Kg2 Bf8



28. Rxd6! Bxd6 (If 28... Re4 29. Rxg6+) 29. Qxd6 Qa1 30. Qxg6+ Kf8 31. Qxf5+ Fritz considers Bb5 even stronger, providing immediate support to the passed d-pawn. Kg8 32. d6 Qg7 33. Bc4+ Kh8 34. Nh4 Ra8 35. Ng6+ Kh7 36. Ne5+ Kh8 37. Nf7+ Kg8 38. Nxb6+ Kh8 39. Qh5 Rxa2 40. Nf7+ Kg8 41. Nd8+ Kf8 42. Ne6+ 1-0

**Knoxville City Ch - 1**  
**October 22, 2009**  
**Sanchit Wadhawan - 1437**  
**David Mueller - 1703**  
**Annotated by Dave Mueller**

1. e4 c5 2. c3 d5 3. exd5 Qxd5 4. d4 Nc6 5. Be3 cxd4 6. cxd4 e5 7. Nf3 Bb4+ 8. Nc3 exd4 9. Nxd4 Nge7 I headed for this prepared position, which I feel is equal. I had a hunch that Sanchit would seek to simplify, which he did. However, it's not his best move, and now Black gets a position that is much easier to play. 10. Nxc6 Bxc3+ 11. bxc3 Qxc6 12. Qb3 O-O 13. Qc4 The computer actually likes White's 12th and 13th moves, which seek to get the queens off the board. Qg6 14. Qd3 (14. Bd3!? Qxg2 15. Be4 might have been interesting.) 14... Bf5 15. Qb5 Rfe8 16. Qe5 (We both missed 16. Qxb7 Be4 17. Qa6! but it is easy to understand Sanchit's caution.) 16... Rad8 17. Qg3 A critical position when I spent 30 minutes looking for a forced win. [See diagram on following page]



**Qxg3** (17... Qc6 doesn't seem to lead to anything, but I fell in love with the idea of 17... Nd5 because of 18. Qxg6 Nxe3!! with the threat of 19... Nc2#. But if black calmly answers with 19. fxe3 then it's not any better for Black than the game continuation.) **18. hxg3 Nd5 19. Rd1 Nxc3?!** Not an outright blunder, but I don't know how I missed 19... Nxe3 20. fxe3 (20. Rxd8 Nc2+!) destroying White's pawn structure. I think it is partly because I thought the move I played was good enough, as the a-pawn should fall due to my mate threats. **20. Rxd8 Rxd8 21. Be2 Bd3 22. Bxd3 Rxd3 23. Bd2 h6** But now I got cold feet! I was concerned that after 23... Nxa2! my knight might be difficult to extricate, particularly because of my exposed back rank. But the computer says I should have taken the pawn. **24. Bxc3 Rxc3 25. Kd2** Here Sanchit offered a draw, which should surprise no one. To be fair, I was a bit short on time. **Ra3 26. Ra1 Kf8 27. Kc2 Ke7 28. Kb2 Ra5 29. Kc3 g5 30. Kb3 Re5 31. Rc1 Kd6 32. Rc2 Rb5+ 33. Ka3 h5 34. Ka4 Rb6 35. Ka3 Kd5 36. Rd2+ Kc4 37. Rc2+ Kd3 38. Rc7 f6 39. Rc8?** White's last chance to cut off Black's king with 39. Re7, which might have been good enough to draw, if for no other reason than I was getting real short on time. After the move he played I believe that Black is lost by force. **39... Ke2 40. Rc2+ Kf1 41. f4** More resistance

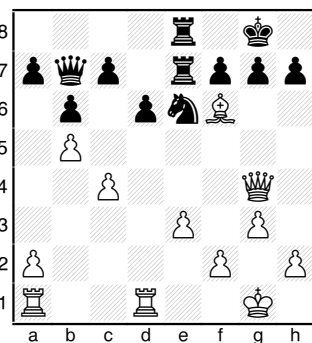
is offered by 41. f3 but I feel that Black wins with g4!, pinning down the weak g-pawns. **41... g4 42. Ka4 Kg1 43. Ka3 Kh2 44. Rc3 Kxg2 45. Rd3 Kf2 46. Rc3 f5 47. Rc5 Kxg3 48. Rxf5 h4 0-1**

#### NTWO - Bishops (4)

Tim Staley - 1148

Malcolm Estrada - 1466

**1. c4 e5 2. Nc3 Nc6 3. g3 b6 4. Bg2 Bb7 5. e3 Nf6 6. Nge2 Na5!?** This introduces a nice way of ridding White of his fianchettoed bishop. This opening sequence should be noted by those wishing an easy method of combating the English. **7. Bxb7 Nxb7 8. O-O = Be7 9. d4 exd4 10. Nxd4 O-O 11. Qf3 Nc5 12. Rd1** Preventing Nd3 and threatening Nc6 to obtain the bishop. **Qc8 13. Nf5** Better was the plan of e4-e5. **Re8 14. b4 Ne6 15. Nxe7+** (Fritz shows that 15. e4 is still possible: 15. e4 Bxb4? 16. Nd5 Nxd5 17. exd5 Nf8 (17... Qb7 18. Qb3) 18. Nxg7 Kxg7 19. Bb2+ and a forced mate is in the offing.) **15... Rxe7 16. b5** This attempt to open a diagonal for the bishop creates a hole on c5. Better was h4. **Nc5** Better was Ng5 followed by Qb7. **17. Nd5 Nxd5 18. Qxd5 Qb7 19. Qg5 Rae8 20. Bb2 Ne6 21. Qg4 d6 22. Bf6?**



**Rd7** Better was the immediate h5. **23. Bxg7?? h5 24. Qxh5 Nxg7 25. Qg4 Rde7 26. Rd5 Re4 27. f4 Qc8 28. Qg5 Qh3 29. Re1 Rxe3 30. Rxe3 Rxe3 31. Kf2 Re8** Also

good is Ra3. **32. f5** Necessary was Qh4. **Qxh2+ 33. Kf3 Qe2+ 34. Kf4 Re4# 0-1**

#### NTWO - Open (5)

Sano Mariano - 2204

Will Stevenson - 2138

**1. d4 Nf6 2. c4 e6 3. Nf3 c5 4. Nc3 cxd4 5. Nxd4 Bb4 6. Qb3 Na6 7. a3 Bxc3+ 8. Qxc3 Ne4 9. Qc2 Qa5+ 10. Bd2 Qxd2+ 11. Qxd2 Nxd2 12. Kxd2 b6 13. Rd1 Bb7 14. Nb5** Better is completing development with f3 followed by e4. Save tricks for later, observing the sound principles of the opening phase of the game. **Ke7 15. Kc1 d5 16. cxd5** Better is f3 and upon dxc, Nd6. **Rhc8+ 17. Kb1 Bxd5 18. f3** Necessary was Nc3 or even b4. (18. Nc3 Bb3 19. Rc1 Nc5 20. g3) **18... Bb3 19. Rc1?? Ba2+ 0-1**

#### NTWO - Open (4)

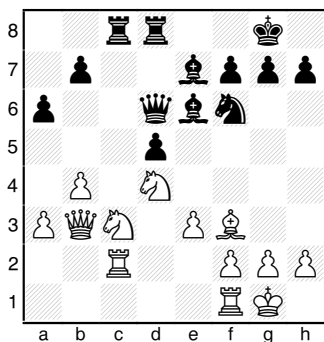
Will Stevenson - 2138

Eleanor Barkley - 1639

**1. Nf3 c5 2. g3 Nf6 3. Bg2 Nc6 4. O-O g6 5. c4 Bg7 6. Nc3 O-O 7. d3 d6 8. Rb1 Rb8 9. a3 a6 10. b4 Nd7 11. b5!?** Bd2 was surely expected. **axb5 12. Nxb5 b6** Black starts to stray. Nde5 was best. **13. Bd2 Bb7 14. Qc1 Ba6** Again, Nde5 was best. It is unsure what this bishop move does. **15. Bh6 Nde5 16. Bxg7 Kxg7 17. Qc3 f6 18. Ne1** Threatening f4. **Qd7 19. Nc2 Bb7 20. Ne3 Nd4? 21. Nxd4 Bxg2 22. Kxg2 cxd4 23. Qxd4 b5 24. cxb5 Rxb5 25. Rxb5 Qxb5 26. Rc1 Qb7+ 27. Kg1 Rc8 28. Rxc8 Qxc8 29. Nc4** Correct is retaining the piece for counter play. **f8 30. a4 Qb7 31. Nxe5 Qb1+ 32. Kg2 fxe5 33. Qe4 Qc2 34. h4 Kf7? 35. Qc4+ Qxc4 36. dxc4 Ke6 37. Kf3 h6 38. Ke4 Kd7 39. Kd3 Kc6 40. Kc3 Kb6 41. Kb4 e6 42. e4 g5 1-0**

**NTWO - Knights (4)**  
**Randall Vaughn - 1244**  
**Jordan Smith - 1277**

The Champion of the Knights and Bishops Section creates a backward pawn and methodically builds pressure against it, making the win look routine. 1. d4 e6 2. c4 d5 3. Nc3 Nf6 4. Nf3 Nbd7 5. a3 c5 6. cxd5 exd5 7. Bg5 Be7 8. dxc5 Nxc5 9. e3 O-O 10. Be2 Nce4 11. Bxf6 Nxf6 Black shows a willingness to defend the isolated pawn. More prudent, though, would be Bxf6: (11... Bxf6 12. Nxd5 {12. Nd4 Nxc3 13. bxc3 Qc7 =} 12... Bxb2 13. Rb1 Bxa3 -/+ ) 12. O-O Be6 13. Nd4 Qb6 14. b4 a6 15. Rc1 Rac8 16. Qb3 Qd6 17. Bf3 Rfd8 18. Rc2



Ne4? (18... Ng4 19. g3 Ne5 20. Be2 b5 =) 19. Nxe6 Qxe6 20. Bxe4 (Cleaner is Nxd5: 20. Nxd5 Rxc2 {20... Bd6 21. Rd1 Ng5 22. Be2} 21. Qxc2 Ng5 22. Nxe7+ Qxe7 23. Be2) 20... Rxc3 21. Rxc3 Qxe4 22. Rd1 Bf6 23. Rcd3 d4 24. h3 b5 25. Qc2 h6 26. Qd2 Qd5 27. exd4 g5 28. Qc3 Be7 29. Qc7 Kf8 30. Qe5 f6 31. Qxd5 Rxd5 32. Rc1 Bd8 33. Rc6 a5 34. Rc5 Rxc5 35. dxc5 Ke7 36. c6 axb4 37. axb4 Ke8 38. Rd5 Bc7 39. Rxb5 Kd8 40. Rd5+ Kc8 41. b5 Kb8 42. g4 Kc8 43. Kg2 Bd8 44. Kf3 1-0

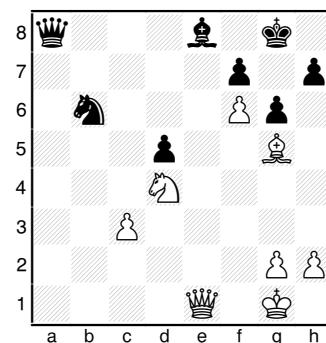
**NTWO - Pawns (5)**  
**Anna Li - 404**  
**Donnie Douglas - 801**

1. e4 e5 2. Nf3 Nc6 3. Nc3 Nf6 4. Bc4 Bc5 (The Center Fork Trick deserves a try: 4... Nxe4 5. Nxe4 d5 6. Bd3

dxe4 7. Bxe4 Bd6) 5. Ng5 O-O 6. O-O d6 7. b3?! h6 8. Nf3 a6 9. a4 Qe7 10. Re1 Nd4 11. d3 Nxf3+ Better was Bg4, increasing the pressure and threatening to rupture the kingside. 12. Qxf3 Bb4 13. Bd2 Bxc3 14. Bxc3 c6 threatening Bg4 followed by b5. 15. b4 Better was d4, protecting the bishop and opening the position to exert pressure on the center. Be6 16. Bxe6 Qxe6 17. g3 Again, d4 is best but still drawish. d5? Qh3 was best. Now Black drops a pawn. 18. exd5 Qxd5 19. Qxd5 Nxd5 20. Rxe5? (20. Bxe5 Nxb4 21. Rab1 a5 22. Re4+/=) 20... Nxc3 21. a5 Rfe8 22. Rc5 Ne2+ 23. Kh1 f6 24. c3 Attempting to trap the knight. Re5 25. Rc4 Rb8 26. d4 Entombing his own rook. Re4 27. f3 Re3 28. Ra3 Rxf3 29. Kg2 Rf5 30. g4 Rd5 31. Ra2 Re8 32. Kf2 Nc1 33. Rc2 Nd3+ 34. Kg3 Re3+ 35. Kg2 Ne1+ 36. Kf2 Nxc2 37. Kg2 0-1

**NTWO - Rooks (4)**  
**Ben Li - 1740**  
**Ashraf Armanios - 1696**

1. e4 e6 2. d4 d5 3. Nd2 c5 4. c3 Nc6 5. Ngf3 Qb6 6. exd5 exd5 7. Nb3 (7. Qe2+ Be7 (7... Be6 8. Nb3) 8. dxc5 Qxc5 9. Nb3) 7... Be6 Better was c4. Now White acquires the two bishops and a small initiative. 8. dxc5 Bxc5 9. Nxc5 Qxc5 10. Be3 Qe7 11. Bb5 Nf6 12. Nd4 Bd7 13. O-O O-O 14. Re1 Qd6 15. Nb3 b6 Black misses the simple Ng4, forcing off Black's bishop. 16. Bxc6 Bxc6 17. Nd4 Bd7 18. f3 Rfe8 19. Qd2 Be6 20. a4 a6 21. b4 Rac8 22. Bf4 Qd7 23. b5 Qb7 24. a5 Ra8 25. Reb1 bxa5 26. Rxa5 (26. b6!) 26... axb5 27. Raxb5 Qc8 28. Rb7 Ra1 29. Rxa1 Qxb7 30. Re1 Qa6 31. Bg5 Nd7 32. f4 Nb6 33. f5 Bd7 34. Rxe8+ Bxe8 35. Qe1 Qa8 36. f6 g6?! (36... Bd7 37. fxc7 Nc4 38. Bh6 Qe8 39. Qg3 Ne5 40. h3 f6 41. Qf4)



37. Bh6 (37. Nf5! h5 {37... Qd8 38. Ne7+ Kh8 39. Bh6 Bb5 40. Bg7#} 38. Nd6 Bc6 39. Nxf7) 37... Bd7 38. Qe7 Qe8 39. Qxe8+ Bxe8 40. Kf2 Nd7 41. Bg7 Nc5 42. Ke3 Ne6 43. Nxe6 fxe6 44. Kd4 Bb5 45. g3 Bc4 1/2-1/2

## 2009 Music City Open

The one-day tournament of 5 rounds was held at the Nashville Chess Center on December 21st with 21 players participating. **Ronald Burnett** accumulated 4.5 points, giving up a draw only in the 5<sup>th</sup> round to 1912-rated Josh Salter (who tied for 3rd-5th with 3.5 points). David Justice yielded a point to Burnett only and secured second place with 4.0 points.

## Prolific Peter Produces Again!

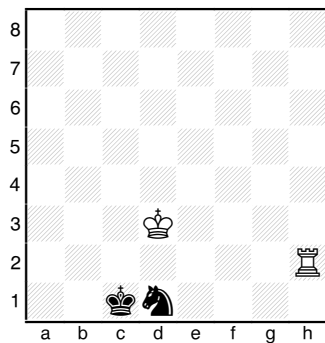
Peter Lahde just published another comprehensive historical tome: [Isaac Kashdan, American Chess Grandmaster: A Career Summary With 757 Games](#). Peter provides crosstables of events in which Kashdan participated and chronicles the tournaments that demonstrate why Kashdan was regarded as one of the best players in the world during the 30s and early 40s. Moreover, Peter supplies many missing game scores that most other sources don't possess. The book is available for online sales!

## Scholastic Corner

### Rook vs. Knight—Easy?

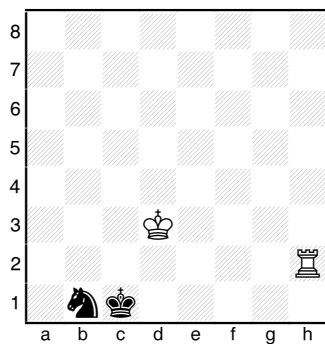
In the January issue of Chess Life, the Rook versus Knight Ending was assessed as easy. So easy, in fact, that it was detailed in two sentences without a diagram. Additionally, International Arbiter Eric Schiller stated that "the rules of chess should stipulate that Rook vs. Knight is a technical draw, noting relevant exceptions." Hence it behooves us to have an instance grasp for this "automatic" draw. First of all, if your rook and knight are widely separate, there is a good chance that you will lose!

In Diagram 1 one can clearly see why the knight is able



**Diag. 1 Ideal position with Black to move; else loss.**

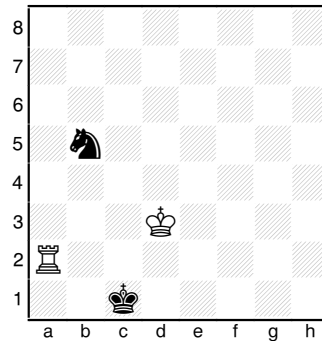
to command a draw even when the weaker king is trapped on the back rank. The knight naturally keeps the kings out of opposition with its sheltering moves. Diagram 2 shows that even



**Diag. 2 Easy draw.**

with the knight on a worse square, though, the draw is easy.

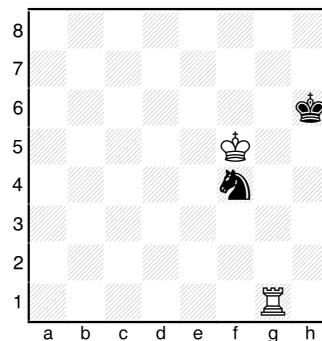
If 1. Ra2 Kd1 and no progress has been made. If, say, 1. Rg2 Na3 2. Ra2! Nb1!. If Black had played 2... Nb5, then his separation from the king would have been fatal. Observe Diag. 3. White



**Diag. 3 Loss (after 2... Nb5).**

continues 3. Ra6! driving the knight further from the king. Now any king move loses the knight or allows mate. So, 3... Nc7 is forced, whereupon the knight is netted with 4. Rc6+.

Diagram 4 below shows another challenging position for Black to hold the draw.



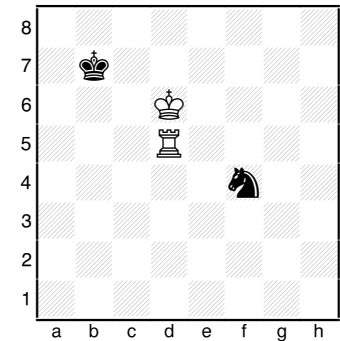
**Diag. 4 Danger!**

Observing the guideline of keeping the knight and king close, one might play 1... Nh5. But then White wins instantly with 2. Rh1! when the king is forced to abandon the knight. Hence, 1... Nd5 looks reasonable, keeping the kings out of opposition. However, this should lead to a loss after

2. Rg5!. The knight has become separated from the king and will become the target of the hunt rather than the king.

Whether the king or knight is the primary target depends on how distant the pieces are. Almost always, though, if the knight can be driven to the side of the board and is not adjacent to the king, then it can be stalemated and won.

Diagram 5—the conclusion of a 1257 Arabic manuscript—demonstrates this. White shows the most effective method of corralling the



**Diag. 5 Knight hunt.**

knight by playing 1. Rd2, staying two diagonal lengths from the knight—just as the king is positioned! Note that this pattern both avoids all checks and takes squares from the knight. Now if Black tries 1... Ng6 2. Rf2 herds him to the edge of the board. If then 2... Kb6 3. Rf6 Nh4 (note the diagonal configuration) 4. Ke5+ Kc5 5. Ke4 closes on the helpless knight. And if from Diagram 5 Black had tried 2... Kb6, then 2. Ke5 Ng6+ 3. Kf6 Nf4 (diagonal configuration, again) 4. Kf5 Nh5 5. Rg2! and the knight dies after Rg5.

The moral is, keep your knight close and keep your king out of corners. Though masters might categorize this draw as "easy," lessers should approach it with respect.

## Top-10 Region 1 Qualifiers

### HIGH SCHOOL

---

Marsh, Matthew	2132	5.0
Suich, Peter	1988	4.0
Roberts, Elena	638	4.0
Klawonn, Matthew	1395	3.0
LeClair, Adam	772	3.0
Winchester, David	nnnn	3.0
Lyne, Chris	nnnn	2.5
Sturgill, Anthony	nnnn	2.5
Georgopoulos, Connor	nnnn	2.0
Agarwal, Rajat	619	2.0

### JUNIOR HIGH

---

Wadhawan, Sanchit	1543	4.0
Marsh, Corry	1701	4.0
Simonsen, Andrew	1399	4.0
Fu, Jason	1657	3.5
Suich, Victoria	1120	3.0
Blue, Charles	1388	3.0
Gellert, Isabel	1252	3.0
Hoyos, Jacob	803	3.0
Christopher, John	911	3.0
Tippit, Joseph	846	3.0

### ELEMENTARY

---

Hong, Kevin	1185	5.5
Marsh, Hunter	1003	5.0
Hodge, James M	1103	5.0
Simonsen, David	1002	5.0
Hunn, Jered	533	5.0
Xue, Albert Shaoya	1088	4.5
Hoyos, Jordan	1144	4.5
Perumalla, Abhinav	672	4.5
Schult, Christopher	1146	4.5
Broady, Caroline	nnnn	4.5

### PRIMARY

---

Gellert, Adrian	1009	4.5
Moon, Kenny	566	4.5
Chen, Kevin	608	4.0
Hodge, Henry	371	4.0
Wang, Kevin	nnnn	4.0
Nodit, Paul Gabrie	1010	4.0
Brady, Ethan John	406	4.0
Kesterson, Joseph	252	3.5
Joo, Benjamin	459	3.0
Repogle, Jack	332	3.0

## Top-10 Region 2 Qualifiers

### HIGH SCHOOL

---

Lillis, Austin	1077	4.5
Singh, Pranav	973	4.0
Houston, CJ	977	4.0
Venkatesh, Bharath	1052	4.0
Edmonds, Lucas	1150	3.5
Hammett, Jon	1079	3.5
Donnan, Matthew	920	3.5
Pyle, William Earl	916	3.5
Wallace, Ryan	721	3.5
De Bruyn, Quinton	797	3.0

### JUNIOR HIGH

---

Warren, John	1257	5.0
Carter, Cary	1203	4.0
Sharpe, Kyle Andre	1028	4.0
Weishaar, Luke	1051	4.0
Dalal, Nayshil	1126	3.5
Sandoval, Elijah	982	3.5
Sharpe, Trevor	1189	3.0
Houston, Charlie	1336	3.0
Koehl, Daniel	500	3.0
Weishaar, Rachel	801	3.0

### ELEMENTARY

---

Patri, Tanay	729	5.0
Webber, Zachary	404	4.0
Jurka, Mitchell	104	4.0
Hamlin, Charlie	503	4.0
DuPlooy, Jake	nnnn	3.0
Herring, Brock	536	3.0
Hudgins, Clay	nnnn	3.0
Bruno-Arimura	144	3.0
Plaisted, Luke	605	3.0
Doshi, Parth	nnnn	2.0

### PRIMARY

---

Webber, Nicholas	579	5.0
Simmons, Joshua	689	4.0
Shibata, Eric	262	3.0
Kirkland, Grant	nnnn	3.0
Back, Brandon	311	2.0
Kurkowski, Bradley	nnnn	2.0
Webber, Samantha	nnnn	0.5
Herring, Ian	nnnn	0.5

**Top-10 Region 3 Qualifiers****HIGH SCHOOL**

KUMAR, VIKAS	1818	5.0
SCHAFFER, JACOB	1505	3.5
BREYER, MAX	1536	3.5
FRANKLIN, SHANE	1143	3.0
FAN, DAVID	1427	3.0
BEDWELL, CHASE	454	3.0
KONJETI, RAVI	1341	2.5
THOMPSEN, BRANDON	nnnn	2.0
SILBAUGH, JESSICA	nnnn	2.0
PARKER, CODY	nnnn	2.0

**JUNIOR HIGH**

NEGLIA, SALVATORE	1624	4.0
TOMLIN, NICHOLAS	1510	4.0
BOEGER, REED	1355	3.5
DOUTHITT, AUTUMN	1435	3.5
WILSON, JAKE	930	3.5
GUDIBANDA, ADITYA	1377	3.0
WELCH, CHRISTOPHER	1266	3.0
LI, ANGELA	1202	3.0
VELKOVSKY, PAVEL	845	3.0
ZUMWALT, HARRY	723	3.0

**ELEMENTARY**

HAHAMYAN, HENRIK	1204	4.5
ELE DAI, JING	935	4.0
MIRNICS, MARCO	1201	4.0
STRANG, SAM	864	4.0
HARMAN, AUBRIE	848	4.0
ZHANG, ALVIN	1254	4.0
ZHANG, VINCENT	939	3.5
QIN, ALEXANDER	1245	3.0
NAGAREDA, EVAN	346	3.0
WILSON, ELSA	766	3.0

**PRIMARY**

SHARPE, WESTON	939	5.0
ZHAO, SHIJIE JACK	941	4.0
ELLIS, SETH	280	4.0
HABERMANN, JULIAN ANIL	537	3.5
KOLI, TANUJ	655	3.5
PAO, LUCAS	668	3.0
STEED, ANDREW	516	3.0
CAHOON, COLE JAMES	575	3.0
LUCHTEFELD, MICHAEL	nnnn	3.0
BURGETT, MATTHEW	532	3.0

**Top-10 Region 4 Qualifiers****HIGH SCHOOL**

Woodbury III, George	1828	4.5
Horobetz, Graham	2011	3.5
Gibson, Graham	1648	3.5
Bulington, Carter	1366	3.0
Carrillo, Oscar	1495	2.5
Knowles, Chase	1773	2.5
Parvathareddy, Rohith	1660	2.5
Anne, Abou	1658	2.5
Cherukuri, Uday	1397	2.5
Beatty, Jonathan	1723	2.5

**JUNIOR HIGH**

Vogt, Nathan	1902	4.5
Gupta, Jason	1295	3.5
Mo, John	1280	3.5
Vogt, Gretchen	1122	3.5
Stafford, Joseph	1542	3.0
Dupont, Randon	1173	3.0
Berryhill, Jansen	1278	3.0
Banks III, Marvin	1198	2.5
Berryhill, Jenner	1283	2.5
Dasari, Vijaya	1007	2.5

**ELEMENTARY**

Gazulapalli, Anoop	1390	5.0
Sernel, Ragan	1174	4.0
Friedman, Max	1590	4.0
Levine, Benjamin	1562	4.0
Dominguez, Jason	1071	4.0
Burgess, Carter	1429	4.0
Bhagwat, Nagaraj	1315	4.0
Jambulapati, Arun	1282	3.0
Karri, Vivekanudeep	1221	3.0
Moody, Jackson	1147	3.0

**PRIMARY**

Bhat, Nina	1158	5.0
Cao, Kevin	889	4.0
Mummareddy, Sai	839	4.0
Konuganti, Nachiket	466	3.5
Burgess, Shaun	1351	3.0
Kouch, Joshua	982	3.0
Dasari, Krishna	542	3.0
Sernel, Kenner	888	3.0
Rotz, Michael	731	3.0
Kouch, Justin	660	3.0

## TENNESSEE WINTER OPEN — KINGS & QUEENS (U2000) Wall Chart

Name/State ID	Group/Team	Rate	Rnd 1	Rnd 2	Rnd 3	Rnd 4	Rnd 5
1. BURNETT, RON TN 12093120		2403	- 16	B 3	B 9	B 2	B 4
			X1.0	2.0	3.0	3.5	4.0
2. ANDREWS, TODD D TN 12583055		2343	B 8	B 10	B 13	B 1	B 5
			1.0	1.5	2.5	3.0	4.0
3. STEVENSON, WILL AL 12857774		2138	B 14	B 1	B 10	B 13	B 9
			1.0	1.0	1.5	2.5	3.5
4. JUSTICE, DAVID TN 12814183		2128	B 11	B 9	B 6	B 10	B 1
			1.0	1.0	2.0	3.0	3.5
5. GRAY, DONNY GA 10381878		2115	B 12	B 13	B 7	B 9	B 2
			1.0	1.0	2.0	3.0	3.0
6. ARNOLD, JUSTIN KY 12667835		1946	B 9	B 11	B 4	B 12	B 10
			0.0	1.0	1.0	2.0	3.0
7. TANAS, ZAKI TN 13656491	Q	1799	B 10	B 8	B 5	B 14	B 12
			0.0	1.0	1.0	2.0	3.0
8. SUICH, PETER TN 12779311		2011	B 2	B 7	HALF	B 11	B 13
			0.0	0.0	0.5	1.5	2.5
9. SANA, MARIANO TN 12890909		2204	B 6	B 4	B 1	B 5	B 3
			1.0	2.0	2.0	2.0	2.0
10. MARSH, MATTHEW TN 12843523		2132	B 7	B 2	B 3	B 4	B 6
			1.0	1.5	2.0	2.0	2.0
11. HUA, MARGARET MO 13289400		1752	B 4	B 6	B 12	B 8	B 14
			0.0	0.0	0.5	0.5	1.5
12. MARSH, CORRY TN 12843522	Q	1706	B 5	B 14	B 11	B 6	B 7
			0.0	1.0	1.5	1.5	1.5
13. BARKLEY, ELEANOR AL 12792270	Q	1639	HALF	B 5	B 2	B 3	B 8
			0.5	1.5	1.5	1.5	1.5
14. ALATAIWI, ALI TN 13746224	Q	1821	B 3	B 12	BYE	B 7	B 11
			0.0	0.0	1.0	1.0	1.0
15. DiGIORGI, BRUNO TN 13487881		418	BYE	---	---	---	---
			1.0	1.0	1.0	1.0	1.0
16. SIMS, CARLOS TN 20005559		2012	- 1	---	---	---	---
			F0.0	0.0	0.0	0.0	0.0

## TENNESSEE WINTER OPEN — ROOKS (U1750 ) Wall Chart

Name/State ID	Group/Team	Rate	Rnd 1	Rnd 2	Rnd 3	Rnd 4	Rnd 5
1. ARMANIOS, ASHRAF TN 14094777		1696	B 10	B 8	B 14	B 2	B 6
			1.0	2.0	3.0	3.5	4.5
2. LI, BIN TN 13511415		1740	B 15	B 6	B 4	B 1	B 3
			1.0	2.0	3.0	3.5	4.0
3. COLEMAN, PATRICK TN 13482266		1599	B 8	B 10	B 12	B 5	B 2
			0.0	1.0	2.0	3.0	3.5
4. WINSTEAD, RYAN KY 13606057		1725	B 7	B 11	B 2	B 6	B 10
			1.0	2.0	2.0	2.0	3.0
5. WINSTEAD, BLAKE KY 13606042		1662	B 11	B 16	B 9	B 3	B 7
			0.0	1.0	2.0	2.0	3.0
6. NEGLIA, SALVATORE TN 12939260		1624	B 9	B 2	B 11	B 4	B 1
			1.0	1.0	2.0	3.0	3.0
7. MOORE, ZACHARY TN 12667690		1533	B 4	B 13	B 8	B 14	B 5
			0.0	1.0	2.0	3.0	3.0
8. LEVINE, BEN TN 13544181		1421	B 3	B 1	B 7	B 11	B 13
			1.0	1.0	1.0	2.0	3.0
9. SCHAFER, JACOB TN 12913914		1498	B 6	B 15	B 5	B 13	B 14
			0.0	1.0	1.0	1.5	2.5
10. BLAIR, BENJAMIN TN 11071511		1530	B 1	B 3	B 15	B 12	B 4
			0.0	0.0	1.0	2.0	2.0
11. VAN DER MEER, WIEB TN 12552192		1528	B 5	B 4	B 6	B 8	B 15
			1.0	1.0	1.0	1.0	2.0
12. MAHAN, ROBERT VA 10199204		1446	B 13	B 14	B 3	B 10	B 16
			1.0	1.0	1.0	1.0	2.0
13. SUICH, VICTOR TN 12732019		1607	B 12	B 7	B 16	B 9	B 8
			0.0	0.0	1.0	1.5	1.5
14. McDONALD, RICHARD TN 14213948		1556	B 16	B 12	B 1	B 7	B 9
			0.5	1.5	1.5	1.5	1.5
15. WADHAWAN, SANCHIT TN 13399514		1543	B 2	B 9	B 10	B 16	B 11
			0.0	0.0	0.0	1.0	1.0
16. JUSTICE, PAUL TN 12844683		1364	B 14	B 5	B 13	B 15	B 12
			0.5	0.5	0.5	0.5	0.5

### 2010 TENNESSEE GIRLS CHESS CHAMPION

April 24, 2010

4 Round Swiss (Game 75)

Nashville Chess Center, 2911 Belmont Blvd., Nashville, TN

## TENNESSEE WINTER OPEN — KNIGHTS (U1250) & BISHOPS (U1500)

### Wall Chart, page 1

Name/State ID	Group/Team	Rate	Rnd 1	Rnd 2	Rnd 3	Rnd 4	Rnd 5
1. VAUGHN, RANDALL TN 12915612		1244	B 16	B 12	B 6	B 4	B 5
2. ESTRADA, MALCOLM TN 12811126	B	1466	B 8	B 10	HALF	B 7	B 4
3. LILLIS, AUSTIN TN 13747364		969	B 10	B 11	B 12	B 6	B 9
4. SMITH, JORDAN KY 12896270	B	1277	B 9	B 7	B 5	B 1	B 2
5. LI, ANGELA TN 13043990		1227	B 17	B 14	B 4	B 12	B 1
6. GELLERT, ISABEL TN 13399520		1189	B 22	B 20	B 1	B 3	B 18
7. STALEY, TIM GA 12625534		1149	B 21	B 4	B 13	B 2	B 15
8. WEISHAAR, LUKE TN 14191493		1051	B 2	B 15	B 18	B 14	B 11
9. GROHN, LARRY TN 12554623		1010	B 4	B 22	B 20	B 11	B 3
10. QIN, ALEXANDER TN 13298561		1238	B 3	B 2	BYE	B 13	B 19
11. MANNERS, ROY TN 12649484		1218	B 13	B 3	B 17	B 9	B 8
12. LYNN, JOSHUA TN 12937075		1163	B 18	B 1	B 3	B 5	B 14
13. CHRISTOPHER, JOHNNATHAN TN 14200963		911	B 11	B 21	B 7	B 10	B 20
14. SANDOVAL, ELIJAH TN 14232387		809	BYE	B 5	B 15	B 8	B 12
15. SUICH, VICTORIA TN 12902341		1120	B 20	B 8	B 14	B 17	B 7
16. BLOOM, LEONARD TN 14141050		986	B 1	B 18	B 21	B 20	HALF
17. P MARSH, HUNTER TN 13473408		958	B 5	BYE	B 11	B 15	B 22
18. DAI, JING BMS TN 14191121		845	B 12	B 16	B 8	B 22	B 6
19. DAI, JING TN 13550602		832	HALF	---	---	B 21	B 10

## KNIGHTS (U1250) & BISHOPS (U1500), cont.

Name/State ID	Group/Team	Rate	Rnd 1	Rnd 2	Rnd 3	Rnd 4	Rnd 5
20. BOGGS, STEVE TN 12899917	B  nnnn	B 15	B 6	B 9	B 16	B 13	
		1.0	1.0	1.0	1.5	1.5	
21. MALLARD, DAVID TN 14193766	B  nnnn	B 7	B 13	B 16	B 19	BYE	
		0.0	0.0	0.0	0.0	1.0	
22. DAI, WEI TN 13760212	846	B 6	B 9	HALF	B 18	B 17	
		0.0	0.0	0.5	0.5	0.5	

## TENNESSEE WINTER OPEN — PAWNS (U1000) Wall Chart

Name/State ID	Group/Team	Rate	Rnd 1	Rnd 2	Rnd 3	Rnd 4	Rnd 5
1. DOUGLAS, DONNIE TN 14232672	801	B 8	B 6	B 3	B 4	B 7	
		1.0	2.0	3.0	3.5	4.5	
2. GELLERT, ADRIAN TN 13692672	935	B 4	B 3	HALF	B 5	B 6	
		1.0	1.0	1.5	2.5	3.5	
3. WEISHAAR, RACHEL TN 14222716	801	B 7	B 2	B 1	B 6	B 4	
		1.0	2.0	2.0	3.0	3.5	
4. WEISHAAR, KAYLA TN 14232761	415	B 2	B 8	B 5	B 1	B 3	
		0.0	1.0	2.0	2.5	3.0	
5. ATKINS, RUBEN TN 14232666	591	B 6	B 7	B 4	B 2	B 8	
		0.0	1.0	1.0	1.0	2.0	
6. SANDOVAL, JERRY TN 14232693	238	B 5	B 1	B 7	B 3	B 2	
		1.0	1.0	2.0	2.0	2.0	
7. LI, ANNA TN 13701153	404	B 3	B 5	B 6	B 8	B 1	
		0.0	0.0	0.0	1.0	1.0	
8. YUAN, ROGER TN 14262886	301	B 1	B 4	BYE	B 7	B 5	
		0.0	0.0	1.0	1.0	1.0	

### 2010 TENNESSEE SENIOR OPEN (Age 50 and above)

May 14–16, 2010

Fair Park Senior center, 1433 Livingston Road, Crossville, TN

5 Round Swiss @ G/120. First round Friday or Saturday.

Entries: 931-484-9593; questions: hdsabine@citlink.net

**NTWO - Knights (4)**

Larry Grohn  
Roy Manners

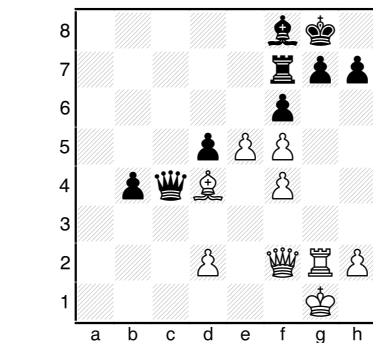
1. e4 c5 2. Bc4 e5 3. Nf3 d6  
4. Nc3 Nf6? 5. h3 (5. Ng5!  
and it is an enhanced Fried  
Liver Attack.) 5... Be7 6.  
d3 O-O 7. Bd2 Be6 8. g4 Bxc4  
9. dxc4 Nbd7 Certainly Nc6  
was better, leaving a  
running spot for the king's  
knight on d7 and holding out  
the possibility of Nd4 to  
temporarily shelter the  
backward pawn. 10. Bg5 Ne8  
Better was Qb6 to discourage  
queenside castling. 11. Bxe7  
Qxe7 That backward pawn is  
going to be tough to defend  
without the bishop. 12. Nd5  
Qd8 13. g5 Nb6 Nc7 was  
better, supporting b5, too.  
14. Ne3 Qd7 15. b3 Rd8  
Passively acquiescing to  
defense. Either f6 or a5  
was better, introducing  
counterplay. 16. Qd2 Qe6  
17. O-O-O a5? 18. Qxa5 Na8??  
Forced was d6. 19. h4?!  
(19. Qxd8 Nec7 20. Qxd6)  
19... b6 20. Qe1 h6 21. gxh6  
Qxh6 22. Kb1 Qf4 23. Qe2  
(23. Nd2) 23... Qxe4 24. Ng5  
Qg6 25. Rdg1 f5 26. Nd5  
Rd7? 27. h5 Qh6 28. Nf3 Nf6  
29. Rg6 Nxd5! 30. cxd5 Qf4?  
31. Rh4 Qxh4 32. Nxb4 Nc7  
33. c4 The pawn can't be  
taken because of the pin  
along the c4-g8 diagonal, so  
h6 or Qd3 was better. Ne8  
34. Re6 Nf6 35. Nxf5 Nxd5  
36. Qg4 Nf4 37. Re7 Rxe7 38.  
Nxe7+ Kh7 39. Ng6 Rf6 40.  
Nxf4 Rxf4 41. Qg6+ Kg8 42.  
h6 Rf7 43. h7+ 1-0

**NTWO - Rooks (4)**

Patrick Coleman - 1599  
Blake Winstead - 1662

1. b4 d5 2. Bb2 Bf5 3. Nf3  
Nc6 Black really starts out  
shaky in this opening. He  
should just play e6, Nf6,  
and then follow with a5 or  
c5 (depending on how White  
responds). 4. a3 e6 5. e3  
Nf6 6. c4 Be7 7. b5 Nb8 Na5  
is more forcing. 8. Be2 c6  
9. Nc3 cxb5 Better was dxc4  
to really bust up the

advanced pawns. 10. cxb5 O-O  
11. O-O Nbd7 Regardless,  
Black has equalized. 12.  
Qa4? Nc5 13. Qd1 Nd3 14.  
Bxd3 The white-squared  
bishop is more valuable, so  
Qb3 should have been tried.  
(14. Qb3 Nd7 15. Na4) 14...  
Bxd3 15. Re1 Qb6 16. a4 a6  
17. Ne5 Bf5 18. g4 More  
reliable is the simple a5.  
Bd6 19. Nxd5 exd5 (19...  
Nxd5! 20. Nd7?! {20. gxf5  
Bxe5 21. Bxe5 exf5 22. Qf3  
Qe6} 20... Qc7 21. Nxf8 Bc2  
22. Qf3 Bxf8) 20. gxf5 axb5  
21. axb5 Qxb5 22. Rb1 Qe8  
23. Ng4 Nxb4 24. Qxg4 f6 25.  
f4 b5 26. Re2 Qe4 27. Rc1  
Rf7 28. Rg2 Bf8 29. Bd4 b4  
30. Rc6 Qe7 (30... Ra2  
threatening Qb1+, mating;  
however, even Fritz didn't  
produce more than a draw  
after h3: 31. h3 Qd3 32.  
Rxf6 Rxf6 33. Bxf6 Rxd2 34.  
Bd4 Qb1+ 35. Kh2 Rxd2+ 36.  
Kxg2 b3 37. Kf2 (37. f6 Qg6)  
37... Qc2+ 38. Kg3 Qc1 39.  
Kg2 b2 40. f6 Qd2+ 41. Kg3  
=) 31. Qf3 Qd8? Qe4 should  
have been played. Now Rxf6  
works because of the hanging  
rook on a8. 32. e4 Rc8 33.  
Rxc8 Qxc8 34. e5 Qc4 35. Qf2

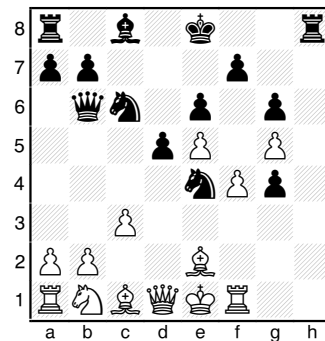


Qc1+ (35... Bc5! Fritz11  
saw this! 36. Bxc5 Qc1+ 37.  
Qf1 Qxc5+ 38. Kh1 b3 -/+)  
36. Qf1 Qxd2?? (36... Qxf1+  
37. Kxf1 fxe5 38. Bxe5 Rxf5  
39. Ke2 Kf7-/+)  
37. Rxd2 b3  
38. Qb5 fxe5 39. fxe5 Rxf5  
40. Qxd5+ Kh8 41. Rf2 Rxf2  
42. Kxf2 h6 43. Qd8 Kg8 1-0

**NTWO - Rooks (5)**

Winstead, Ryan - 1725  
Blair, Ben - 1530

1. e4 e6 2. d4 d5 3. e5 c5  
4. c3 Nc6 5. f4 h5 6. h4  
White should have ignored  
Black's move and simply  
continued Nf3. Now Black  
has an advantage because of  
the weak Black squares on  
the kingside as well as d4  
needing defense. Qb6 7. Nf3  
Nh6 8. Be2 Bd3 followed by  
Bc2 could have given White  
more defense. Nf5 9. Ng5 g6  
Much stronger was cxd4. 10.  
g4 Ng3 11. dxc5 Bxc5 12. Rh2  
Be7 Threatening Qg1+ 13.  
Rf2 Bxg5 Much stronger was  
hxg followed by Rxh5. 14.  
hxg5 Ne4 Better was hxg,  
opening the file for the  
rook. 15. Rf1 hxg4



16. Qb3 (16. Bxg4? Ng3)  
16... g3 Even better was  
trying to maintain the  
queens with Qc5, at least  
keeping the queenside pawn  
structure in tact. 17. Qxb6  
axb6 18. Rg1 d4 19. Bf3  
Nxb5? Much better was Nc5.  
Black's pawns are not so  
threatening that this  
sacrifice is justified. 20.  
Bxc6+ bxc6 21. fxg5 Rh3 22.  
cxd4 Ra4 23. Be3 c5 24. Bf4  
Stronger was b3, chasing the  
rook. Rxd4 25. Bxg3 Rd3 26.  
Bf2 Rdf3 Better was Rd5.  
27. Nd2 Rf5 28. Nc4 Rh2??  
29. Nd6+ 1-0

**State Individual Finals February 13, 2010**

Tennessee Tech University awards a first-place (\$4,000) and a second-place (\$2,000) scholarship to the first- and second-place finisher, respectively, of the High School Section!

# BOARD OF DIRECTORS

## **PRESIDENT:**

Malcolm Estrada  
123 Annview LN  
Harrison, TN 37341  
H: (423) - 326-1446  
e-mail: straightleg111@aol.com

## **VICE-PRESIDENT:**

Paul Semmes  
1010 N. Maple Ave.  
Cookeville, TN 38501  
H: (931) 863- 4082  
e-mail: PaulSemmes@charter.net

## **SECRETARY:**

Chris Prosser  
733 Long Hunter Court  
Nashville, TN 37217  
H: (615) 399 - 8432  
e-mail: regioniii@aol.com

## **TREASURER:**

Angela McElrath-Prosser  
733 Long Hunter Court  
Nashville, TN 37217  
H: (615) 399 - 8432  
e-mail: tcanews@aol.com

## **INTERNET CHESS COORDINATOR:**

Alan Kantor  
577 Livingston Road, Apt. 23  
Crossville, TN 38555  
H: (931) 200-9038  
W: (931) 787-1234 ext. 128  
e-mail: kantor@charter.net

## **SCHOLASTIC COORDINATOR:**

Harry D. Sabine  
P. O. Box 381  
Crossville, TN 38557  
H: (931) 484-4878  
W: (931) 484-9593  
e-mail: hdsabine@citlink.net

## **TOURNAMENT COORDINATOR:**

Larry Grohn  
7032 Igoo Gap Road  
Chattanooga, TN 37421  
H: (423)-243-8235  
e-mail: LarryGrohn@comcast.net

## **TN CHESS NEWS EDITOR:**

Leonard Dickerson  
420 Oran Road  
Knoxville, TN 37932  
H: (865) 966-1095  
e-mail: lsdict@tds.net

## **EAST TENNESSEE DIRECTOR:**

Victor Suich  
707 Pritchard  
Morristown, TN 37813  
(423) 586-4351  
e-mail: vesuich@bellsouth.net

## **MIDDLE TENNESSEE DIRECTOR:**

Roy Manners  
1215 Cumberland Heights Road  
Clarksville, TN 37040  
H:(931) 552-1839  
e-mail: clarkvillechessclub@charter.net

## **WEST TENNESSEE DIRECTOR:**

Marla Stafford  
P. O. Box 770474  
Memphis, TN 38117  
e-mail: Westregion4@aol.com

## **Regional Scholastic Coordinators**

### **Region 1:**

David Marsh  
4411 Stillwood Road  
Louisville, TN 37777  
H: (865) 982-7216; NESGIV4DAVE@aol.com

### **Region 2:**

Michael Ake  
16 Pinecrest Dr.  
Wildwood, GA 30757  
Cell phone: (423) 505-8214  
O: (423) 493-5406; revmake@bellsouth.net

### **Region 3:**

Chris Prosser  
733 Long Hunter Court  
Nashville, TN 37217  
H: (615) 399-8432; e-mail: regioniii@aol.com

### **Region 4:**

Brian Vogt  
2669 Sweet Maple Cove  
Germantown, TN 38139  
H: (901) 624-0020; b-vogt@comcast.net